

A Detailed Town Report of:

# Saddle River, NJ 07458



**Diane Nielson, Sales Representative**  
20 West Clinton Ave, Tenafly, NJ 07670  
Tel: 201-894-1234 Fax: 201-894-1235  
Res: 201-541-4050 Cell: 201-463-3916

This report is available online  
at: [www.diane-nielson.com](http://www.diane-nielson.com)



# Saddle River, NJ 07458

## Town Information

<b>Town Name:</b>	Saddle River
<b>City Hall:</b>	Saddle River Borough Hall
<b>Address:</b>	100 East Allendale Road, Saddle River NJ 07458
<b>Phone Number:</b>	201-327-2609
<b>Government:</b>	Mayor & Council
<b>Type:</b>	Borough
<b>Police Employees:</b>	20
<b>Population:</b>	3,201
<b>Crime Rate (per 1000 people):</b>	
<b>Persons Per Sq Mile:</b>	
<b>Distance to NYC:</b>	23 miles
<b>Website:</b>	<a href="http://www.saddleriver.org">www.saddleriver.org</a>

### Parks:

There is a volunteer recreation director, Carol Boyajian.

Facilities include 1 public playground, 3 athletic fields, and 4 public tennis courts.



**Diane Nielson, Sales Representative**  
20 West Clinton Ave, Tenafly, NJ 07670  
Tel: 201-894-1234 Fax: 201-894-1235  
Res: 201-541-4050 Cell: 201-463-3916

This report is available online  
at: [www.diane-nielson.com](http://www.diane-nielson.com)

# Saddle River, NJ 07458

## Town Information

### Town History:

Founded in 1702

### Town Meetings:

Borough Council: 3rd Monday, 7 PM

Municipal Court: 1st Tuesday, 3 PM and 3rd Wednesday, 3 PM

Board of Education: 3rd Tuesday, 7:30PM, Wandell School

### Real Estate Ordinances:

Application required and permit needed. Sign no larger than 3 square feet. Temp. sign (6 months) -\$30, Temp. sign. No "Sold" sign can be pasted on top of the "For Sale" sign. No "Open House" signs permitted.

### Public Library

**Address:**

No Public Library

**Phone Number:**

**Hours:**

**Director:**

**Number of Books:**



**Diane Nielson, Sales Representative**

20 West Clinton Ave, Tenafly, NJ 07670  
Tel: 201-894-1234 Fax: 201-894-1235  
Res: 201-541-4050 Cell: 201-463-3916

This report is available online  
at: [www.diane-nielson.com](http://www.diane-nielson.com)

# Saddle River, NJ 07458

## Education & School Information

### Public Schools

Supt. of Schools, David Goldblatt  
 Wandell School (PK-8): 201-327-0727, Located at 97 East Allendale Road  
 Ramsey High School: 201-327-6800, Located East Main Street & Island Avenue  
 Saddle River Day K-12, Located at 147 Chestnut Road, 201-327-4050

Average Class Size	2003-2004	
	School	State
Pre-K		13.5
Kindergarten	18.0	19.1
Grade 1	17.5	19.5
Grade 2	16.0	19.7
Grade 3	14.0	20.3
Grade 4	11.5	20.7
Grade 5	14.0	21.7
Grade 6		22.2
Grade 7		22.0
Grade 8		21.8
Grade 9	21.8	21.3
Grade 10	21.6	21.2
Grade 11	21.1	20.1
Grade 12	20.3	20.2
Special Ed. (Ungraded)	4.0	9.3
<b>Total School</b>	19.7	19.4

#### Length of School Day - Ramsey High School:

(Amount of time school is in session on a normal school day)

**School:** 6 hours: 43 minutes

**State Average:** 6 hours: 34 minutes

#### Instructional Time:

**School:** 6 hours: 7 minutes

**State Average:** 5 hours: 30 minutes

#### Length of School Day - Middle School:

(Amount of time school is in session on a normal school day)

**School:** 6 hours: 41 minutes

**State Average:** 6 hours: 25 minutes

#### Instructional Time:

**School:** 5 hours: 30 minutes

**State Average:** 5 hours: 32 minutes



**Diane Nielson, Sales Representative**  
 20 West Clinton Ave, Tenafly, NJ 07670  
 Tel: 201-894-1234 Fax: 201-894-1235  
 Res: 201-541-4050 Cell: 201-463-3916

This report is available online  
 at: [www.diane-nielson.com](http://www.diane-nielson.com)

# Saddle River, NJ 07458

## School Information

<b>Student/Computer Ratio:</b>				
(Numbers of students per computer available for the purposes of supervised instruction)				
	High School	State Average	Middle School	State Average
<b>2001-02</b>	3.8	4.0	2.4	4.7
<b>2002-03</b>	3.6	3.9	1.9	4.4
<b>2003-04</b>	3.4	3.7	2.0	4.1

<b>Internet Connectivity (Ramsey High School)</b>				
(Percents of room locations in the school that have access to the Internet)				
	2002-03		2003-04	
<b>Locations</b>	School	State Avg.	School	State Avg.
Classroom	100%	94.1%	100%	96.1%
Library/Media Ctrs	100%	99.9%	100%	94.7%
Computer Labs	100%	90.5%	100%	96.5%
All Locations	100%	95.2%	100%	96.1%

<b>Internet Connectivity ( Saddle River Middle School)</b>				
(Percents of room locations in the school that have access to the Internet)				
	2002-03		2003-04	
<b>Locations</b>	School	State Avg.	School	State Avg.
Classroom	100%	95.2%	100%	96.0%
Library/Media Ctrs	100%	98.0%	100%	98.3%
Computer Labs	100%	98.2%	100%	99.3%
All Locations	100%	95.8%	100%	96.5%

<b>Language Diversity: (High School)</b>	
(First language spoken at home in order of frequency)	
<b>English</b>	90.8%
<b>Korean</b>	1.9%
<b>Japanese</b>	1.2%
<b>Spanish</b>	1.2%
<b>Russian</b>	0.5%
<b>Cantonese</b>	0.4%
<b>Mandarin</b>	0.7%
<b>Others</b>	3.3%

<b>Language Diversity: (Middle School)</b>	
(First language spoken at home in order of frequency)	
<b>English</b>	90.3%
<b>Others</b>	9.7%



**Diane Nielson, Sales Representative**  
 20 West Clinton Ave, Tenafly, NJ 07670  
 Tel: 201-894-1234 Fax: 201-894-1235  
 Res: 201-541-4050 Cell: 201-463-3916

This report is available online  
 at: [www.diane-nielson.com](http://www.diane-nielson.com)

# Saddle River, NJ 07458

## Ramsey High School Information

### Advanced Placement Participation

	School	State Average
2001 - 02	27.8%	15.7%
2002 - 03	27.4%	15.8%
2003 - 04	54.8%	28.8%

### Graduation Rate:

	School	State Average
Class of 2003 (2002 - 03)	99.4%	89.4%
Class of 2004 (2003 - 04)	99.5%	90.6%

### Post Graduation Plans

(Percentage of graduating seniors pursuing various self-reported post-high school plans)

Intended Pursuits	Class of 2003	Class of 2004
Four-year College/University	81.8%	82.9%
Two-year College	8.5%	12.1%
Other College	1.7%	
Other Post-secondary School	2.3%	1.7%
Military	1.1%	1.1%
Full-time Employment	4.5%	2.2%
Part-time Employment		
Unemployed		
Other	0.1%	0.0%

### Dropout Rates

#### 2003 - 04

Percentage of students in grades 9-12 who dropped out during the school year	School	State
White	0.2%	1.1%
Black	0.0%	3.5%
Asian & Pacific Islander	0.0%	0.7%
American Indian & Alaska Native	0.0%	5.3%
Hispanic	0.0%	3.9%
Male	0.3%	2.2%
Female	0.0%	1.6%
<b>Total:</b>	0.1%	1.9%

### Student Expulsions

(Number of students who were expelled)

	School	State Average
2001 - 02	0	97
2002 - 03	0	82
2003 - 04	0	102

### Student Suspensions

(Percentage of students who were suspended)

	School	State Average
2001 - 02	2.7%	14.2%
2002 - 03	13.7%	14.2%
2003 - 04	7.0%	14.8%

School Information Furnished by The New Jersey Department of Education at <http://education.state.nj.us>



**Diane Nielson, Sales Representative**

20 West Clinton Ave, Tenafly, NJ 07670  
 Tel: 201-894-1234 Fax: 201-894-1235  
 Res: 201-541-4050 Cell: 201-463-3916

This report is available online  
 at: [www.diane-nielson.com](http://www.diane-nielson.com)

## Saddle River, NJ 07458 Services Information

Utilities and Services	
<b>Water:</b>	Private wells
<b>Gas &amp; Electric:</b>	P.S.E.& G / Rockland Electric
<b>Health:</b>	Valley Hospital, 223 N. Dien Ave., Ridgewood, NJ 07450
<b>Sanitation:</b>	Trash collected twice a week by the borough. Saddle River has a mandatory recycling program, which is collected every Wednesday per zone.

Transportation Information	
<b>Railroads:</b>	NJ Transit, Amtrak
<b>Buses:</b>	NJ Transit, Red & Tan
<b>Major Highways:</b>	9W, Palisades Interstate Parkway, Route 4, Route 17, Garden State Parkway, NJ Turnpike
<b>Airports:</b>	Newark, Kennedy, LaGuardia
<b>Commuter Information:</b>	Short Line Bus Service to the Port Authority. Route 17 easily accessible. Taxi service available: Saddle River Taxi & Limousine: 201-796-1800, Saddle River Limousine: 201-825-8040, Saddle River Limo: 201-445-8933.

Houses of Worship	
<ul style="list-style-type: none"> <li>• St. Gabriel's Roman Catholic Church: 201-327-7881, Located at 88 East Saddle River Road</li> <li>• Zion Lutheran Church: 201-327-0655, Located at 96 Allendale Ave</li> <li>• Church of the Presentation: 201-327-1313, Located at 271 Saddle River Road</li> </ul>	



**Diane Nielson, Sales Representative**  
 20 West Clinton Ave, Tenafly, NJ 07670  
 Tel: 201-894-1234 Fax: 201-894-1235  
 Res: 201-541-4050 Cell: 201-463-3916

This report is available online  
 at: [www.diane-nielson.com](http://www.diane-nielson.com)

# Saddle River, NJ 07458

## Activities Information

### Town Groups

Garden Club	Republican Club
Scouts	Home & School Association
Saddle River Valley Club	Recreation Association
Little League Association	Valley Hospital Auxiliary
Saddle River Valley Newcomers Club	Junior Women's Club
Bishop House Foundation	Saddle River Rescue Squad
Women's Club	4 - H
Big Band	Community Arts

### Miscellaneous Information

None Listed.



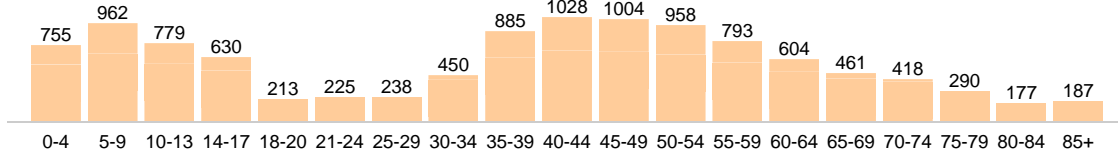
**Diane Nielson, Sales Representative**  
20 West Clinton Ave, Tenafly, NJ 07670  
Tel: 201-894-1234 Fax: 201-894-1235  
Res: 201-541-4050 Cell: 201-463-3916

This report is available online  
at: [www.diane-nielson.com](http://www.diane-nielson.com)

# Community Detail for Saddle River, NJ

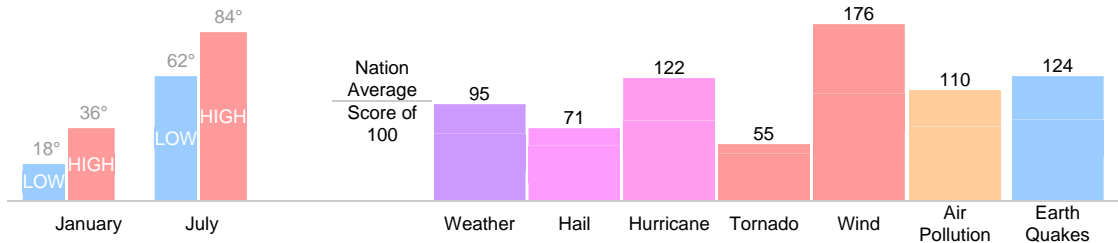
## Age Demographic

Age Demographic provides a snapshot of the ages of people living in this neighborhood. The number at the top of each bar graph is used to show how many people fall into the age range shown at the bottom of the bar graph.



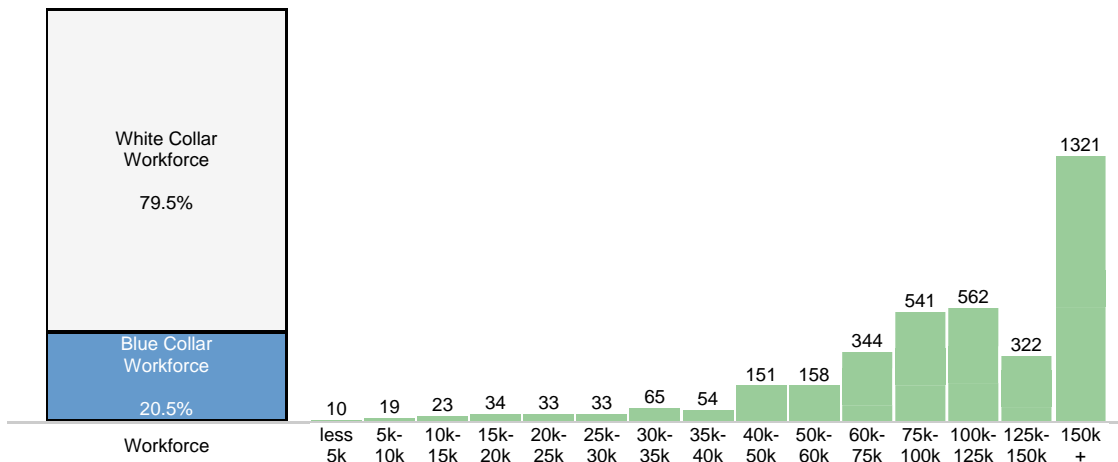
## Environment Evaluation

Average high and low temperatures for this neighborhood are provided below. An environmental risk evaluation compares the risk of a weather or geological event that may occur in this neighborhood with the national risk for that event. The national average is marked by a score of 100. The number at the top of the bar graph shows the risk for the event shown at the bottom of the bar graph.



## Wealth Breakdown

Wealth Breakdown provides a snapshot of the incomes of people living in this neighborhood. The number at the top of each bar graph is used to show how many people fall into the income range shown at the bottom of the bar graph.

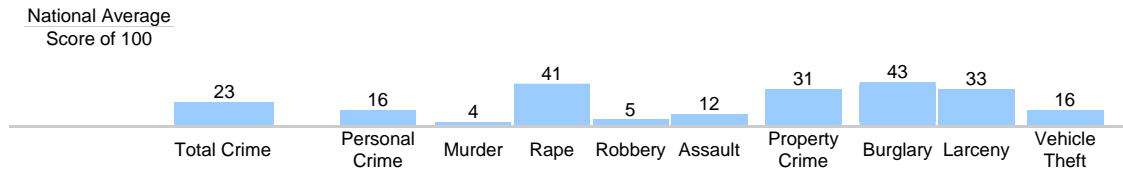


**Diane Nielson, Sales Representative**  
 20 West Clinton Ave, Tenafly, NJ 07670  
 Tel: 201-894-1234 Fax: 201-894-1235  
 Res: 201-541-4050 Cell: 201-463-3916

This report is available online at: [www.diane-nielson.com](http://www.diane-nielson.com)

## Crime Breakdown

Neighborhood Crime Breakdown compares the crime information for this neighborhood with the national average. The national average is marked by a score of 100. The number at the top of each bar graph is used to show how that category compares to the national average.



**Diane Nielson, Sales Representative**  
20 West Clinton Ave, Tenafly, NJ 07670  
Tel: 201-894-1234 Fax: 201-894-1235  
Res: 201-541-4050 Cell: 201-463-3916

This report is available online  
at: [www.diane-nielson.com](http://www.diane-nielson.com)