

A Detailed Town Report of:

Saddle River, NJ 07458



Diane Nielson, Sales Representative
20 West Clinton Ave, Tenafly, NJ 07670
Tel: 201-894-1234 Fax: 201-894-1235
Res: 201-541-4050 Cell: 201-463-3916

This report is available online
at: www.diane-nielson.com

Map of Bergen County



Diane Nielson, Sales Representative
20 West Clinton Ave, Tenafly, NJ 07670
Tel: 201-894-1234 Fax: 201-894-1235
Res: 201-541-4050 Cell: 201-463-3916

This report is available online
at: www.diane-nielson.com

Saddle River, NJ 07458

Town Information

Town Name:	Saddle River
City Hall:	Saddle River Township Hall
Address:	93 Market Street, Saddle River NJ 07458
Phone Number:	201-843-7100
Government:	Mayor Council, Optional Municipal Charter Law, 1950
Type:	Township
Police Employees:	35
Population:	13,155
Crime Rate (per 1000 people):	
Persons Per Sq Mile:	
Distance to NYC:	10 miles
Website:	www.saddlebrookpd.com

Parks:

There is a county park operated by Bergen County, located along the banks of the Saddle River on Saddle River Road in Saddle River. Activities include: baseball, basketball, cheerleading, football, track, wrestling, grand ball, soccer, and girl's softball. Facilities Include: 3 local parks, 1 county park, 5 public playgrounds supervised during the summer, 1 athletic field, and 1 public tennis court.



Diane Nielson, Sales Representative
20 West Clinton Ave, Tenafly, NJ 07670
Tel: 201-894-1234 Fax: 201-894-1235
Res: 201-541-4050 Cell: 201-463-3916

This report is available online
at: www.diane-nielson.com

Saddle River, NJ 07458

Town Information

Town History:

None Listed

Town Meetings:

Meetings held on 2nd Thursday, Town Hall: 7 PM

Real Estate Ordinances:

None Listed

Public Library

Address:	340 Mayhill Street
Phone Number:	201-843-3287
Hours:	
Director:	
Number of Books:	66,521



Diane Nielson, Sales Representative
20 West Clinton Ave, Tenafly, NJ 07670
Tel: 201-894-1234 Fax: 201-894-1235
Res: 201-541-4050 Cell: 201-463-3916

This report is available online
at: www.diane-nielson.com

Saddle River, NJ 07458

Education & School Information

Public Schools

Board of Education: 201-843-1142, Harry Groveman, Located on Mayhill Street

Franklin School: 201-843-8664, Located on Caldwell Street

Helen I Smith School: 201-796-6650, Located on Cambridge Avenue

Salome H Long Memorial School: 201-796-8221, Located on Floral Lane

Saddle River High School: 201-843-2880, Located on Mayhill Street

Saddle River Community School: 201-291-0137, Located on Market Street

*The local school district is a type II school district whose boundaries are coterminous with those of the township. The school system consists of 3 elementary schools- grades k-6, a junior high school grades 7-8, and one high school grades 9-12.

Average Class Size	2003-2004	
	School	State
Pre-K		13.5
Kindergarten	28.0	19.1
Grade 1	25.0	19.5
Grade 2	18.0	19.7
Grade 3	23.5	20.3
Grade 4	24.0	20.7
Grade 5	20.0	21.7
Grade 6	24.5	22.2
Grade 7	31.2	22.0
Grade 8	28.8	21.8
Grade 9	22.2	21.3
Grade 10	21.2	21.2
Grade 11	24.6	20.1
Grade 12	23.8	20.2
Special Ed. (Ungraded)		9.3
Total School	25.3	19.4

Length of School Day - Saddle River High School:

(Amount of time school is in session on a normal school day)

School: 6 hours: 40 minutes

State Average: 6 hours: 34 minutes

Instructional Time:

School: 5 hours: 30 minutes

State Average: 5 hours: 30 minutes

Length of School Day - Middle School:

(Amount of time school is in session on a normal school day)

School: 6 hours: 10minutes

State Average: 6 hours: 25 minutes

Instructional Time:

School: 5 hours: 25 minutes

State Average: 5 hours: 32 minutes



Diane Nielson, Sales Representative

20 West Clinton Ave, Tenafly, NJ 07670
 Tel: 201-894-1234 Fax: 201-894-1235
 Res: 201-541-4050 Cell: 201-463-3916

This report is available online
 at: www.diane-nielson.com

Saddle River, NJ 07458

School Information

Student/Computer Ratio:				
(Numbers of students per computer available for the purposes of supervised instruction)				
	High School	State Average	Middle School	State Average
2001-02	5.3	4.0	6.0	4.7
2002-03	5.3	3.9	5.9	4.4
2003-04	7.2	3.7	6.3	4.1

Internet Connectivity (Saddle River High School)				
(Percents of room locations in the school that have access to the Internet)				
	2002-03		2003-04	
Locations	School	State Avg.	School	State Avg.
Classroom	100%	94.1%	100%	96.1%
Library/Media Ctrs	100%	99.9%	100%	94.7%
Computer Labs	100%	90.5%	100%	96.5%
All Locations	100%	95.2%	100%	96.1%

Internet Connectivity (Saddle River Middle School)				
(Percents of room locations in the school that have access to the Internet)				
	2002-03		2003-04	
Locations	School	State Avg.	School	State Avg.
Classroom	100%	95.2%	100%	96.0%
Library/Media Ctrs	100%	98.0%	100%	98.3%
Computer Labs	100%	98.2%	100%	99.3%
All Locations	100%	95.8%	100%	96.5%

Language Diversity: (High School)	
(First language spoken at home in order of frequency)	
English	77.8%
Spanish	8.3%
Polish	3.3%
Italian	1.9%
Arabic	1.8%
Pilipino	1.2%
Portuguese	0.5%
Others	5.2%

Language Diversity: (Middle School)	
(First language spoken at home in order of frequency)	
English	77.2%
Spanish	7.0%
Pilipino	3.7%
Italian	0.7%
Mandarin	2.0%
Others	9.4%



Diane Nielson, Sales Representative
 20 West Clinton Ave, Tenafly, NJ 07670
 Tel: 201-894-1234 Fax: 201-894-1235
 Res: 201-541-4050 Cell: 201-463-3916

This report is available online
 at: www.diane-nielson.com

Saddle River, NJ 07458

Saddle River High School Information

Advanced Placement Participation

	School	State Average
2001 - 02	11.5%	15.7%
2002 - 03	16.9%	15.8%
2003 - 04	29.8%	28.8%

Graduation Rate:

	School	State Average
Class of 2003 (2002 - 03)	98.4%	89.4%
Class of 2004 (2003 - 04)	96.1%	90.6%

Post Graduation Plans

(Percentage of graduating seniors pursuing various self-reported post-high school plans)

Intended Pursuits	Class of 2003	Class of 2004
Four-year College/University	50.6%	57.1%
Two-year College	34.7%	26.5%
Other College	4.8%	7.1%
Other Post-secondary School		
Military	0.8%	2.0%
Full-time Employment	4.0%	7.1%
Part-time Employment		
Unemployed		
Other	5.1%	0.2%

Dropout Rates

2003 - 04

Percentage of students in grades 9-12 who dropped out during the school year	School	State
White	1.2%	1.1%
Black	0.0%	3.5%
Asian & Pacific Islander	0.0%	0.7%
American Indian & Alaska Native	0.0%	5.3%
Hispanic	1.6%	3.9%
Male	1.4%	2.2%
Female	0.9%	1.6%
Total:	1.2%	1.9%

Student Expulsions

(Number of students who were expelled)

	School	State Average
2001 - 02	0	97
2002 - 03	0	82
2003 - 04	0	102

Student Suspensions

(Percentage of students who were suspended)

	School	State Average
2001 - 02	13.3%	14.2%
2002 - 03	23.4%	14.2%
2003 - 04	12.8%	14.8%

School Information Furnished by The New Jersey Department of Education at <http://education.state.nj.us>



Diane Nielson, Sales Representative

20 West Clinton Ave, Tenafly, NJ 07670
 Tel: 201-894-1234 Fax: 201-894-1235
 Res: 201-541-4050 Cell: 201-463-3916

This report is available online
 at: www.diane-nielson.com

Saddle River, NJ 07458 Services Information

Utilities and Services

Water:	United Water Company
Gas & Electric:	P.S.E.& G
Health:	Valley Hospital, 223 N. Dien Ave., Ridgewood, NJ 07450
Sanitation:	All recyclable items are picked up at curbside and must be rinsed and cleaned. Trash collected twice a week by a private contractor.

Transportation Information

Railroads:	NJ Transit, Amtrak
Buses:	NJ Transit, Red & Tan
Major Highways:	9W, Palisades Interstate Parkway, Route 4, Route 17, Garden State Parkway, NJ Turnpike
Airports:	Newark, Kennedy, LaGuardia
Commuter Information:	Located approximately 10 miles from NYC. Garden State Parkway, Routes 46, 80, 17, & 4 are easily accessible. Railroad Transportation and Bus Service provided by NJ Transit. Taxi Service available from Saddle River Road.

Houses of Worship

- St. Philip, The Apostle, Roman Catholic Church, 201-843-1888, Located at 488 Saddle River Road
- The First Reformed Church of Saddle River: 201-843-6672, Located at 5 Ackerman Avenue
- Holy Apostles Orthodox Church: 201-845-7259, Located at 17 Platt Avenue



Diane Nielson, Sales Representative
 20 West Clinton Ave, Tenafly, NJ 07670
 Tel: 201-894-1234 Fax: 201-894-1235
 Res: 201-541-4050 Cell: 201-463-3916

This report is available online
 at: www.diane-nielson.com

Saddle River, NJ 07458

Activities Information

Town Groups

Saddle River Rotary Club	AARP
Saddle River UNICO	Saddle River UNICO Ladies Auxiliary
VFW	VFW Ladies Auxiliary
Republican Club	Democratic Club
Saddle River Main Lions Club	American Legion
Kiwanis Club	Golden Agers
Senior Citizens Club	

Miscellaneous Information

Senior Citizen's Center: 201-845-4594



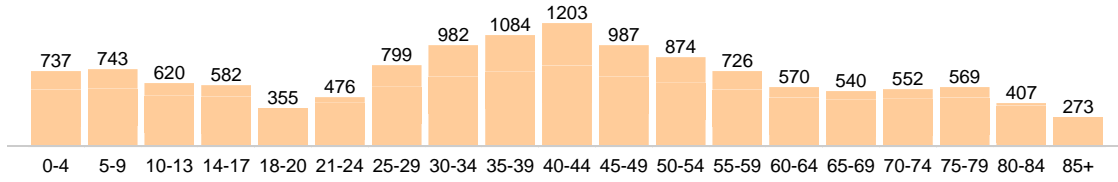
Diane Nielson, Sales Representative
20 West Clinton Ave, Tenafly, NJ 07670
Tel: 201-894-1234 Fax: 201-894-1235
Res: 201-541-4050 Cell: 201-463-3916

This report is available online
at: www.diane-nielson.com

Community Detail for Saddle River, NJ

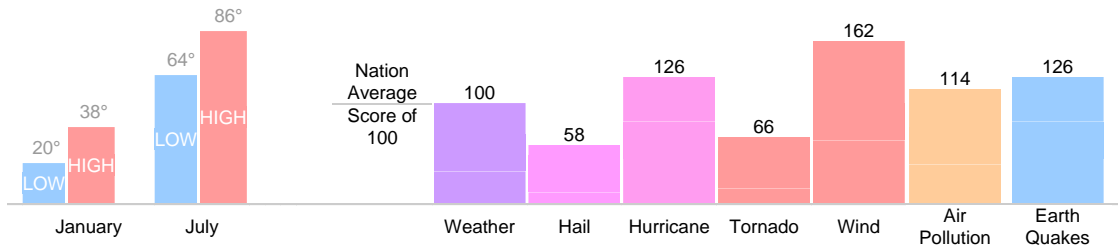
Age Demographic

Age Demographic provides a snapshot of the ages of people living in this neighborhood. The number at the top of each bar graph is used to show how many people fall into the age range shown at the bottom of the bar graph.



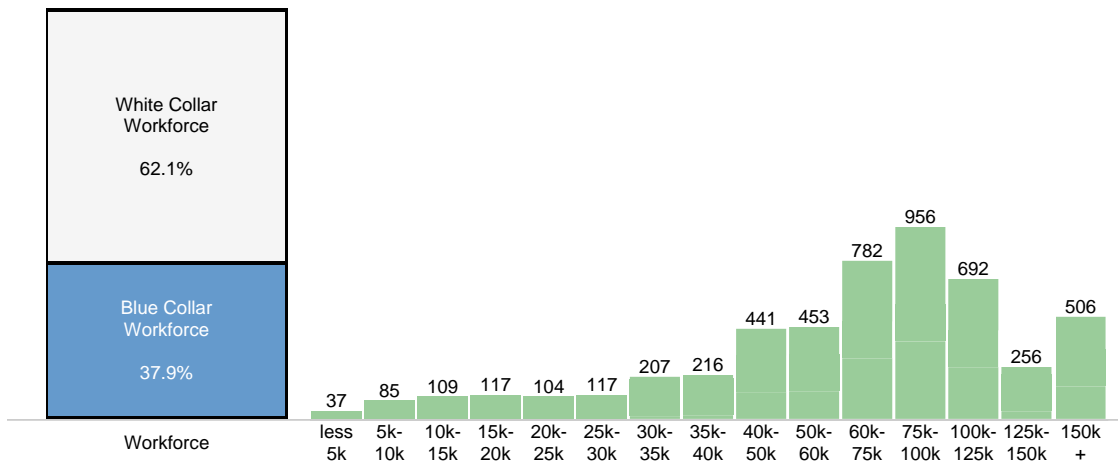
Environment Evaluation

Average high and low temperatures for this neighborhood are provided below. An environmental risk evaluation compares the risk of a weather or geological event that may occur in this neighborhood with the national risk for that event. The national average is marked by a score of 100. The number at the top of the bar graph shows the risk for the event shown at the bottom of the bar graph.



Wealth Breakdown

Wealth Breakdown provides a snapshot of the incomes of people living in this neighborhood. The number at the top of each bar graph is used to show how many people fall into the income range shown at the bottom of the bar graph.

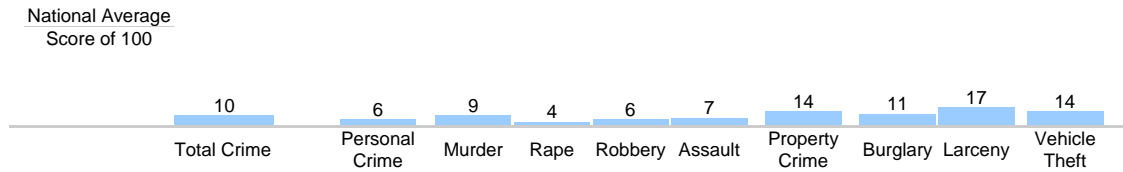


Diane Nielson, Sales Representative
 20 West Clinton Ave, Tenafly, NJ 07670
 Tel: 201-894-1234 Fax: 201-894-1235
 Res: 201-541-4050 Cell: 201-463-3916

This report is available online at: www.diane-nielson.com

Crime Breakdown

Neighborhood Crime Breakdown compares the crime information for this neighborhood with the national average. The national average is marked by a score of 100. The number at the top of each bar graph is used to show how that category compares to the national average.



Diane Nielson, Sales Representative
20 West Clinton Ave, Tenafly, NJ 07670
Tel: 201-894-1234 Fax: 201-894-1235
Res: 201-541-4050 Cell: 201-463-3916

This report is available online
at: www.diane-nielson.com