

A Detailed Town Report of:

# Palisades Park, NJ 07646

ADVERTISEMENT



ADMIT ONE (1) to  
**PALISADES**  
AMUSEMENT PARK, N.J.

GOOD MONDAYS  
and FRIDAYS  
(EXCEPT HOLIDAYS)  
Until 6 P.M.

**FREE**  
ADMISSION  
CIRCUS ACTS  
PARKING  
WORTH 80¢

FREE RIDE  
ANSCO  
**SPACE ROCKET**

FREE RIDE  
**CRAZY  
CRYSTALS**

**BE MY GUEST**  
AT AMERICAS  
GREATEST  
AMUSEMENT PARK

**PALISADES**  
AMUSEMENT PARK N.J.

1/2 MILE SOUTH OF GEORGE WASHINGTON BRIDGE

LOOK FOR THIS COUPON IN ALL  
MAY THROUGH OCTOBER ISSUES

**DC**  
SUPERMAN  
NATIONAL COMICS

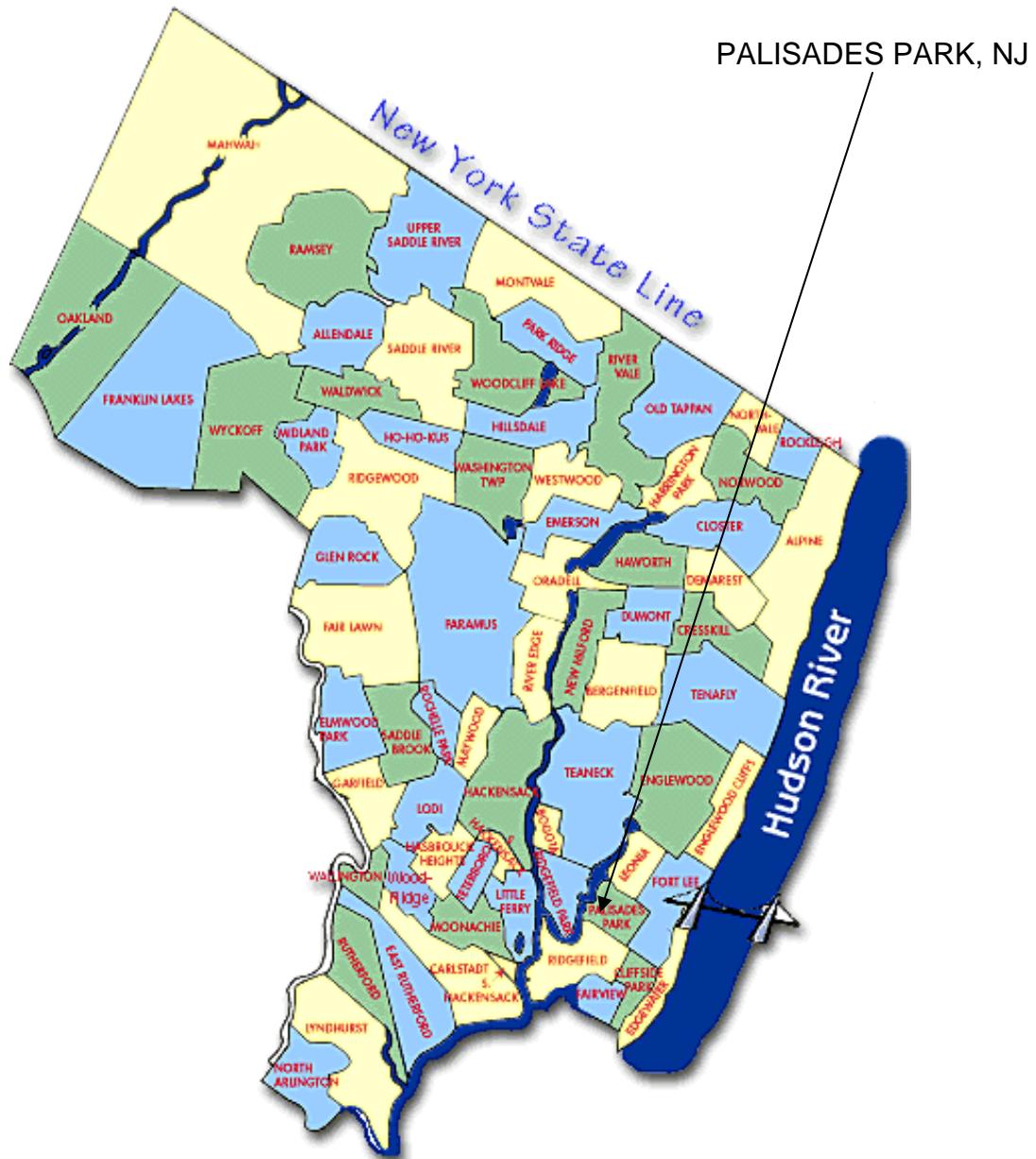
**DC**  
SUPERMAN  
NATIONAL COMICS



**Diane Nielson, Sales Representative**  
20 West Clinton Ave, Palisades Park, NJ 07650  
Tel: 201-894-1234 Fax: 201-894-1235  
Res: 201-541-4050 Cell: 201-463-3916

This report is available online  
at: [www.diane-nielson.com](http://www.diane-nielson.com)

# Map of Bergen County



**Diane Nielson, Sales Representative**  
20 West Clinton Ave, Palisades Park, NJ 07650  
Tel: 201-894-1234 Fax: 201-894-1235  
Res: 201-541-4050 Cell: 201-463-3916

This report is available online  
at: [www.diane-nielson.com](http://www.diane-nielson.com)

# Palisades Park, NJ 07650

## Town Information

<b>Town Name:</b>	Palisades Park
<b>City Hall:</b>	Palisades Park Borough Hall
<b>Address:</b>	275 Broad Avenue., Palisades Park NJ 07650
<b>Phone Number:</b>	201-585-4100
<b>Government:</b>	Mayor and Council
<b>Type:</b>	Borough
<b>Police Employees:</b>	31
<b>Population:</b>	17,073
<b>Crime Rate (per 1000 people):</b>	
<b>Persons Per Sq Mile:</b>	
<b>Distance to NYC:</b>	6 miles
<b>Website:</b>	

### Parks:

Director: Edward Ligotti

Facilities include Palisades Park, Overpeck Park, County Park, local parks, 2 playgrounds, a swim club, 2 athletic fields, and 1 tennis court.

A part-time recreational director is employed



**Diane Nielson, Sales Representative**  
20 West Clinton Ave, Palisades Park, NJ 07650  
Tel: 201-894-1234 Fax: 201-894-1235  
Res: 201-541-4050 Cell: 201-463-3916

This report is available online  
at: [www.diane-nielson.com](http://www.diane-nielson.com)

# Palisades Park, NJ 07650

## Town Information

### Town History:

Palisades Park, 1.21 square miles, is greatly diversified consisting of many ethnic and cultural heritages with the charm one expects to find in a small town. Just 6 miles to NYC and 15 miles to Newark airport.

### Town Meetings:

Meetings held on 3<sup>rd</sup> Tuesdays; Municipal Building, 7PM

### Real Estate Ordinances:

No permit is necessary for the posting of "For Sale" or "For Lease" signs.

### Public Library

<b>Address:</b>	257 2 <sup>nd</sup> Street
<b>Phone Number:</b>	201-585-4150
<b>Hours:</b>	
<b>Director:</b>	Mildred Albarella
<b>Number of Books:</b>	45,638



**Diane Nielson, Sales Representative**  
20 West Clinton Ave, Palisades Park, NJ 07650  
Tel: 201-894-1234 Fax: 201-894-1235  
Res: 201-541-4050 Cell: 201-463-3916

This report is available online  
at: [www.diane-nielson.com](http://www.diane-nielson.com)

# Palisades Park, NJ 07650

## Education & School Information

### Public Schools

Supt. of Schools: 201-947-3560, Charles Smith, Located on 270 First St.  
 Lindbergh Elementary School (Grades K-6): 201-947-3556, Located on Glen Avenue  
 Palisades Park Jr./Sr. High School (Grades 7-12): 201-941-1100, Located in Veteran's Plaza  
 Notre Dame Interparochial School, 312 First St, 201-947-5262

**District Website:**

None Listed

Average Class Size	2003-2004	
	School	State
Pre-K		13.5
Kindergarten	19.3	19.1
Grade 1	23.0	19.5
Grade 2	22.0	19.7
Grade 3	23.0	20.3
Grade 4	23.5	20.7
Grade 5	21.0	21.7
Grade 6	26.6	22.2
Grade 7	19.0	22.0
Grade 8	18.2	21.8
Grade 9	17.5	21.3
Grade 10	16.3	21.2
Grade 11	16.3	20.1
Grade 12	15.2	20.2
Special Ed. (Ungraded)		9.3
<b>Total School</b>	17.1	19.4

#### Length of School Day - High School:

(Amount of time school is in session on a normal school day)

**School:** 6 hours: 12 minutes

**State Average:** 6 hours: 34 minutes

#### Instructional Time:

**School:** 5 hours: 52 minutes

**State Average:** 5 hours: 30 minutes

#### Length of School Day - Middle School:

(Amount of time school is in session on a normal school day)

**School:** 6 hours: 20 minutes

**State Average:** 6 hours: 25 minutes

#### Instructional Time:

**School:** 5 hours: 31 minutes

**State Average:** 5 hours: 32 minutes



**Diane Nielson, Sales Representative**  
 20 West Clinton Ave, Palisades Park, NJ 07650  
 Tel: 201-894-1234 Fax: 201-894-1235  
 Res: 201-541-4050 Cell: 201-463-3916

This report is available online at: [www.diane-nielson.com](http://www.diane-nielson.com)

# Palisades Park, NJ 07650

## School Information

Student/Computer Ratio:				
(Numbers of students per computer available for the purposes of supervised instruction)				
	High School	State Average	Middle School	State Average
<b>2001-02</b>	4.1	4.0	3.0	4.7
<b>2002-03</b>	3.4	3.9	3.4	4.4
<b>2003-04</b>	3.9	3.7	5.5	4.1

Internet Connectivity ( Palisades Park High School)				
(Percents of room locations in the school that have access to the Internet)				
	2002-03		2003-04	
Locations	School	State Avg.	School	State Avg.
Classroom	93.2%	94.1%	100%	96.1%
Library/Media Ctrs	100%	99.9%	100%	94.7%
Computer Labs	100%	90.5%	100%	96.5%
All Locations	93.8%	95.2%	100%	96.1%

Internet Connectivity ( Palisades Park Middle School)				
(Percents of room locations in the school that have access to the Internet)				
	2002-03		2003-04	
Locations	School	State Avg.	School	State Avg.
Classroom	100%	95.2%	100%	96.0%
Library/Media Ctrs	100%	98.0%	100%	98.3%
Computer Labs	100%	98.2%	100%	99.3%
All Locations	100%	95.8%	100%	96.5%

Language Diversity: (High School)	
(First language spoken at home in order of frequency)	
<b>English</b>	34.0%
<b>Spanish</b>	23.6%
<b>Korean</b>	29.1%
<b>Greek</b>	1.1%
<b>Mandarin</b>	1.1%
<b>Others</b>	11.1%

Language Diversity: (Middle School)	
(First language spoken at home in order of frequency)	
<b>English</b>	24.0%
<b>Korean</b>	42.0%
<b>Spanish</b>	23.0%
<b>Others</b>	11.0%



**Diane Nielson, Sales Representative**  
 20 West Clinton Ave, Palisades Park, NJ 07650  
 Tel: 201-894-1234 Fax: 201-894-1235  
 Res: 201-541-4050 Cell: 201-463-3916

This report is available online  
 at: [www.diane-nielson.com](http://www.diane-nielson.com)

# Palisades Park, NJ 07650

## High School Information

### Advanced Placement Participation

	School	State Average
2001 - 02	16.1%	15.7%
2002 - 03	11.8%	15.8%
2003 - 04	14.3%	28.8%

### Graduation Rate:

	School	State Average
Class of 2003 (2002 - 03)	90.0%	89.4%
Class of 2004 (2003 - 04)	94.7%	90.6%

### Post Graduation Plans

(Percentage of graduating seniors pursuing various self-reported post-high school plans)

Intended Pursuits	Class of 2003	Class of 2004
Four-year College/University	44.4%	55.1%
Two-year College	41.1%	29.2%
Other College		6.7%
Other Post-secondary School	1.1%	
Military	2.2%	
Full-time Employment	7.8%	2.2%
Part-time Employment		
Unemployed		
Other	3.4%	6.8%

### Dropout Rates

#### 2003 - 04

Percentage of students in grades 9-12 who dropped out during the school year	School	State
White	0.0%	1.1%
Black	0.0%	3.5%
Asian & Pacific Islander	0.7%	0.7%
American Indian & Alaska Native	0.0%	5.3%
Hispanic	1.0%	3.9%
Male	1.2%	2.2%
Female	0.0%	1.6%
<b>Total:</b>	0.6%	1.9%

### Student Expulsions

(Number of students who were expelled)

	School	State Average
2001 - 02	0	97
2002 - 03		82
2003 - 04	0	102

### Student Suspensions

(Percentage of students who were suspended)

	School	State Average
2001 - 02	18.0%	14.2%
2002 - 03		14.2%
2003 - 04	4.6%	14.8%

School Information Furnished by The New Jersey Department of Education at <http://education.state.nj.us>



**Diane Nielson, Sales Representative**  
 20 West Clinton Ave, Palisades Park, NJ 07650  
 Tel: 201-894-1234 Fax: 201-894-1235  
 Res: 201-541-4050 Cell: 201-463-3916

This report is available online  
 at: [www.diane-nielson.com](http://www.diane-nielson.com)

# Palisades Park, NJ 07650

## Services Information

Utilities and Services	
<b>Water:</b>	Hackensack Water Company
<b>Gas &amp; Electric:</b>	P.S.E. & G.
<b>Health:</b>	Holy Name Hospital, 718 Teaneck Road, Teaneck, NJ 07666
<b>Sanitation:</b>	Garbage-Municipal recycling director Joseph Ferguson

Houses of Worship
<ul style="list-style-type: none"><li>▪ Fawn Mission Center: 201-461-3886, Located at 211 Broad Avenue</li><li>▪ Bergen County Choong Hyun Lutheran Church: 201-947-8714, Located at 232 Broad Avenue</li><li>▪ Grace Evangelical Lutheran Church: 201-944-2107, Located at 9 East Homestead Avenue</li><li>▪ The 777 Mission: 201-947-5454, Located at 442 East Brinkerhoff Avenue</li><li>▪ Korean Presbyterian Church of New Jersey: 201-947-2912, Located at 15 East Edsall Avenue</li><li>▪ First Presbyterian Church: 201-947-3970, Located at 50 West Palisades Blvd.</li><li>▪ G.M.A. US Center: 201-840-1045, Located at 125 East Columbia</li><li>▪ St. Nicholas Roman Catholic Church: 201-944-1154, Located at 442 East Brinkerhoff Avenue</li><li>▪ St. Michael's: 201-944-1061, Located at 19 E. Central Blvd.</li></ul>

Transportation Information	
<b>Railroads:</b>	NJ Transit, Amtrak
<b>Buses:</b>	NJ Transit, Red & Tan
<b>Major Highways:</b>	9W, Palisades Interstate Parkway, Route 4, Route 17, Garden State Parkway, NJ Turnpike
<b>Airports:</b>	Newark, Kennedy, LaGuardia
<b>Commuter Information:</b>	Bus Service To: 41st Street & 8th Avenue from NJ Transit 166th Street from the Red & Tan Lines 178th Street from the Red & Tan Lines



**Diane Nielson, Sales Representative**  
20 West Clinton Ave, Palisades Park, NJ 07650  
Tel: 201-894-1234 Fax: 201-894-1235  
Res: 201-541-4050 Cell: 201-463-3916

This report is available online  
at: [www.diane-nielson.com](http://www.diane-nielson.com)

# Palisades Park, NJ 07650

## Activities & Groups Information

### Town Groups

Knights of Columbus

American Legion

Elks

Lions

Senior Citizen's Club

V.F.W

V.F.A

UNICO Women's Club

Girl Scouts

### Miscellaneous Information

Parochial School - Ridgefield (K-2) & Notre Dame (3-8)

School Transport available for special education students only or vocational students

Notre Dame Inter parochial School: 201-947-5262

Palisades Park Republican Club: 201-461-0528

Palisades Park After School Program: 201-585-7802



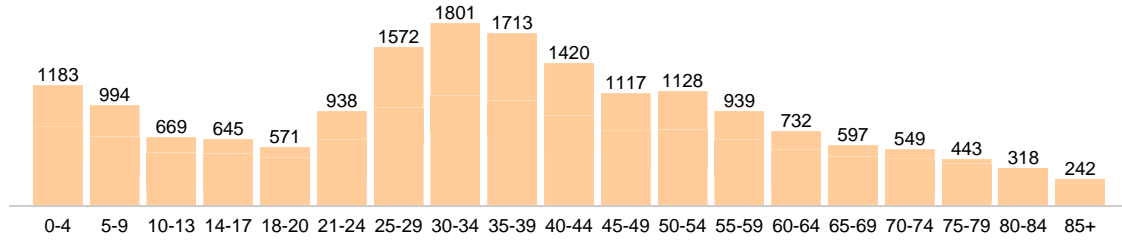
**Diane Nielson, Sales Representative**  
20 West Clinton Ave, Palisades Park, NJ 07650  
Tel: 201-894-1234 Fax: 201-894-1235  
Res: 201-541-4050 Cell: 201-463-3916

This report is available online  
at: [www.diane-nielson.com](http://www.diane-nielson.com)

# Community Detail for Palisades Park, NJ

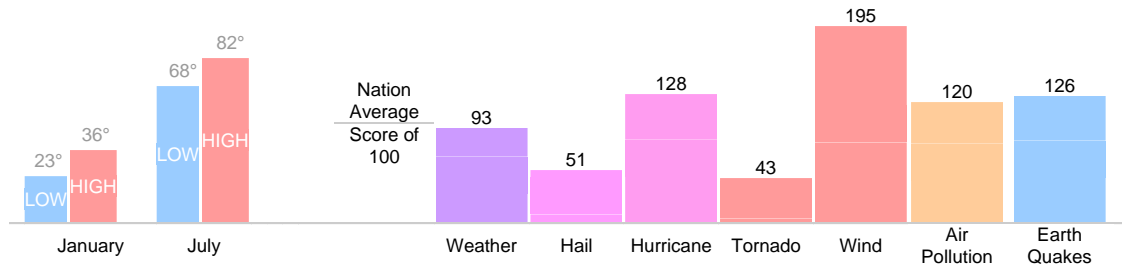
## Age Demographic

Age Demographic provides a snapshot of the ages of people living in this neighborhood. The number at the top of each bar graph is used to show how many people fall into the age range shown at the bottom of the bar graph.



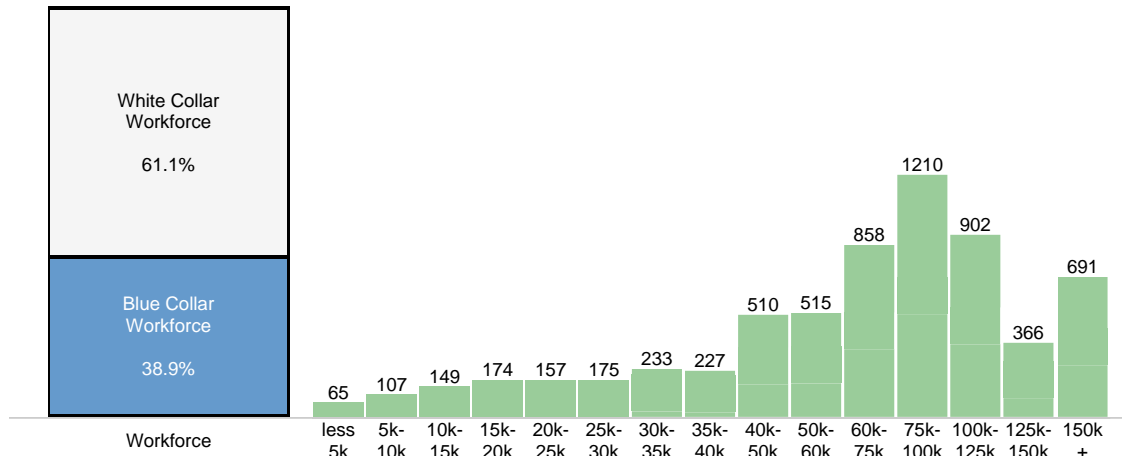
## Environment Evaluation

Average high and low temperatures for this neighborhood are provided below. An environmental risk evaluation compares the risk of a weather or geological event that may occur in this neighborhood with the national risk for that event. The national average is marked by a score of 100. The number at the top of the bar graph shows the risk for the event shown at the bottom of the bar graph.



## Wealth Breakdown

Wealth Breakdown provides a snapshot of the incomes of people living in this neighborhood. The number at the top of each bar graph is used to show how many people fall into the income range shown at the bottom of the bar graph.

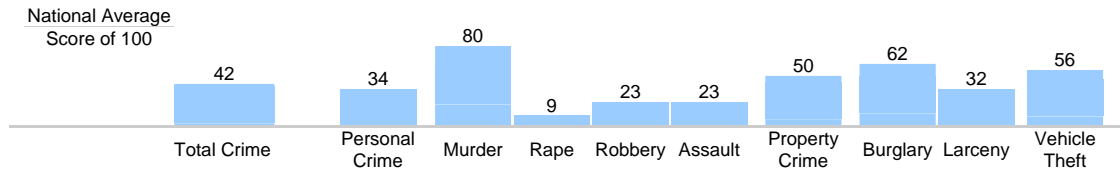


**Diane Nielson, Sales Representative**  
 20 West Clinton Ave, Palisades Park, NJ 07650  
 Tel: 201-894-1234 Fax: 201-894-1235  
 Res: 201-541-4050 Cell: 201-463-3916

This report is available online at: [www.diane-nielson.com](http://www.diane-nielson.com)

## Crime Breakdown

Neighborhood Crime Breakdown compares the crime information for this neighborhood with the national average. The national average is marked by a score of 100. The number at the top of each bar graph is used to show how that category compares to the national average.



**Diane Nielson, Sales Representative**  
20 West Clinton Ave, Palisades Park, NJ 07650  
Tel: 201-894-1234 Fax: 201-894-1235  
Res: 201-541-4050 Cell: 201-463-3916

This report is available online  
at: [www.diane-nielson.com](http://www.diane-nielson.com)