

Detailed Report of:

Fort Lee, NJ 07024



Diane Nielson, Sales Representative
20 West Clinton Ave, Fort Lee, NJ 07024
Tel: 201-894-1234 Fax: 201-894-1235
Res: 201-541-4050 Cell: 201-463-3916

Fort Lee, NJ 07024

Town Information

Town Name:	Fort Lee
City Hall:	Fort Lee Borough Hall
Address:	309 Main St., Fort Lee NJ 07024
Phone Number:	201-592-3970
Government:	
Type:	Borough
Police Employees:	109
Population:	35,461
Crime Rate (per 1000 people):	
Persons Per Sq Mile:	
Distance to NYC:	11 miles
Website:	www.fortleenj.org

Parks:

Fort Lee Historic Park

A full time Director is Employed. Facilities include a recreation center, 5 public playgrounds (supervised in the summer), athletic fields, and public tennis courts.



Diane Nielson, Sales Representative
20 West Clinton Ave, Fort Lee, NJ 07024
Tel: 201-894-1234 Fax: 201-894-1235
Res: 201-541-4050 Cell: 201-463-3916

Fort Lee, NJ 07024

Town Information

Town History:

Otherwise known as "Hollywood on the Hudson" for its history of film making, Fort Lee is 2.50 square miles bordered on the north by Englewood Cliffs, on the south by Cliffside Park, on the west by Englewood and Palisades Park and on the east by the Hudson River with its panoramic views of New York City. Despite its rapid commercial and population growth, Fort Lee still retains the charm one expects to find in a small town. The town has a combination of attractive features. Moreover, Fort Lee's Ethnic & Cultural Heritage have been greatly diversified and arrivals from all nations are settling in the borough.

Town Meetings:

Meetings held on 2nd & 4th Thursdays, Council Chambers, 8 PM

Real Estate Ordinances:

None Listed.

Public Library

Address:	320 Main St.
Phone Number:	201.592.3614
Hours:	
Director:	Rita Altomara
Number of Books:	122,550



Diane Nielson, Sales Representative
20 West Clinton Ave, Fort Lee, NJ 07024
Tel: 201-894-1234 Fax: 201-894-1235
Res: 201-541-4050 Cell: 201-463-3916

Fort Lee, NJ 07024

Education & School Information

Public Schools

Office of the Supt: 201-585-4610, Acct. Supt. Mr. Taffaro, Located at 255 Whiteman

School #1: 201-858-4620, 201-585-4620, Located at Hoym

School #2: 201-585-4630, Located at Jones Road

School #3: 201-585-4640, Located at Myrtle Ave.

School #4: 201-585-4662, Located at Anderson Avenue

Lewis F. Cole Middle School: 201-585-4662, Located at Stillwell Avenue

Fort Lee High School: 201-585-4675, Located at Lemoine Avenue

***Parochial Schools: Christ the Teacher

Average Class Size	2003-2004	
	School	State
Pre-K		13.5
Kindergarten	16.8	19.1
Grade 1	21.5	19.5
Grade 2	25.7	19.7
Grade 3	22.3	20.3
Grade 4	24.0	20.7
Grade 5	23.0	21.7
Grade 6	27.7	22.2
Grade 7	27.0	22.0
Grade 8	28.0	21.8
Grade 9	21.9	21.3
Grade 10	21.2	21.2
Grade 11	21.3	20.1
Grade 12	22.3	20.2
Special Ed. (Ungraded)	15.0	9.3
Total School	21.5	19.4

Length of School Day (High School):

(Amount of time school is in session on a normal school day)

School: 6 hours: 29 minutes

State Average: 6 hours: 34 minutes

Instructional Time:

School: 6 hours: 0 minutes

State Average: 5 hours: 30 minutes

Length of School Day (Middle School):

(Amount of time school is in session on a normal school day)

School: 6 hours: 10 minutes

State Average: 6 hours: 25 minutes

Instructional Time:

School: 5 hours: 36 minutes

State Average: 5 hours: 32 minutes



Diane Nielson, Sales Representative
 20 West Clinton Ave, Fort Lee, NJ 07024
 Tel: 201-894-1234 Fax: 201-894-1235
 Res: 201-541-4050 Cell: 201-463-3916

Fort Lee, NJ 07024

School Information

Student/Computer Ratio:		
(Numbers of students per computer available for the purposes of supervised instruction)		
	School	State Average
2001-02	5.2	4.0
2002-03	5.1	3.9
2003-04	5.3	3.7

Internet Connectivity (Fort Lee High School)				
(Percents of room locations in the school that have access to the Internet)				
	2002-03		2003-04	
Locations	School	State Avg.	School	State Avg.
Classroom	100%	94.1%	100%	96.1%
Library/Media Ctrs	100%	99.9%	100%	94.7%
Computer Labs	100%	90.5%	100%	96.5%
All Locations	100%	95.2%	100%	96.1%

Internet Connectivity (Middle/Elem.)				
(Percents of room locations in the school that have access to the Internet)				
	2002-03		2003-04	
Locations	School	State Avg.	School	State Avg.
Classroom	82.9%	95.2%	100%	96.0%
Library/Media Ctrs	100%	98.0%	100%	98.3%
Computer Labs	100%	98.2%	100%	99.3%
All Locations	90%	95.8%	100%	96.5%

Language Diversity: (High School)	
(First language spoken at home in order of frequency)	
English	52%
Korean	21.3%
Spanish	11.1%
Russian	5.3%
Mandarin	4.4%
Japanese	3.1%
Cantonese	2.2%
Others	0.6%

Language Diversity: (Middle School)	
(First language spoken at home in order of frequency)	
English	32.6%
Korean	21.6%
Spanish	14.5%
Russian	2.9%
Mandarin	5.5%
Japanese	3.3%
Cantonese	2.0%
Others	17.6%



Diane Nielson, Sales Representative
 20 West Clinton Ave, Fort Lee, NJ 07024
 Tel: 201-894-1234 Fax: 201-894-1235
 Res: 201-541-4050 Cell: 201-463-3916

Fort Lee, NJ 07024

High School Information

Advanced Placement Participation		
	School	State Average
2001 - 02	23.0%	15.7%
2002 - 03	21.5%	15.8%
2003 - 04	60.4%	28.8%

Graduation Rate:		
	School	State Average
Class of 2003 (2002 - 03)	95.3%	89.4%
Class of 2004 (2003 - 04)	93.4%	90.6%

Post Graduation Plans		
(Percentage of graduating seniors pursuing various self-reported post-high school plans)		
Intended Pursuits	Class of 2003	Class of 2004
Four-year College/University	71.4%	67.8%
Two-year College	23.7%	26.5%
Other College		
Other Post-secondary School		
Military		1.9%
Full-time Employment	4.0%	3.8%
Part-time Employment		
Unemployed		
Other	0.9%	0%

Student Expulsions		
(Number of students who were expelled)		
	School	State Average
2001 - 02	0	97
2002 - 03	0	82
2003 - 04	0	102

Dropout Rates	2003 - 04	
	School	State
Percentage of students in grades 9-12 who dropped out during the school year		
White	1.3%	1.1%
Black	0%	3.5%
Asian & Pacific Islander	0.5%	0.7%
American Indian & Alaska Native	0%	5.3%
Hispanic	0.7%	3.9%
Male	1.0%	2.2%
Female	0.6%	1.6%
Total:	0.8%	1.9%

Student Suspensions		
(Percentage of students who were suspended)		
	School	State Average
2001 - 02	9.9%	14.2%
2002 - 03	11.7%	14.2%
2003 - 04	9.9%	14.8%

School Information Furnished by The New Jersey Department of Education at <http://education.state.nj.us>



Diane Nielson, Sales Representative
 20 West Clinton Ave, Fort Lee, NJ 07024
 Tel: 201-894-1234 Fax: 201-894-1235
 Res: 201-541-4050 Cell: 201-463-3916

Fort Lee, NJ 07024

Services Information

Utilities and Services

Water:	United Water Company
Gas & Electric:	P.S.E. & G.
Health:	Englewood Hospital 350 Engle St. Englewood, NJ 07631 894-3000
Sanitation:	Trash collected twice a week by a private contractor

Houses of Worship

- Gateway Community Church Assembly of God, 201-585-0058
- Dongsan Alliance Church of NJ, 1625 Palisade Avenue, 201-947-3644
- Jewish Community Center of Fort Lee, 1449 Anderson Avenue, 201-947-1735
 - Fort Lee Gospel Church, 1625 Palisade Avenue, 201-947-1465
- Iglesia Alizanza Cristiana & Misionera, 1625 Palisade Avenue, 201-947-1465
 - Korean District of Christianity, 2175 Lemoine Avenue, 201-461-5755
- Church of the Good Sheperd Episcopal, 157 Palisade Avenue, 201-461-7260
 - Advent Lutheran Church, Bridle Way, 201-224-4342
 - New Synagogue of Fort Lee, 1585 Center Avenue, 201-947-1555
 - Eden Presbyterian Church, 2420 Lemoine Avenue, 201-944-0554
- First Reformed Church of the Palisades, 2420 Lemoine Avenue, 201-947-7240
 - Church of the Madonna, 340 Main Street, 201-944-2727
 - Holy Trinity Roman Catholic Church, 199 Myrtle, 201-944-2911

Transportation Information

Railroads:	NJ Transit, Amtrak
Buses:	NJ Transit, Red & Tan
Major Highways:	9W, Palisades Interstate Parkway, Route 4, Route 17, Garden State Parkway, NJ Turnpike
Airports:	Newark, Kennedy, LaGuardia
Commuter Information:	Red & Tan Lines, NJ Transit Limo/Taxi Service



Diane Nielson, Sales Representative
20 West Clinton Ave, Fort Lee, NJ 07024
Tel: 201-894-1234 Fax: 201-894-1235
Res: 201-541-4050 Cell: 201-463-3916

Fort Lee, NJ 07024

Activities & Groups Information

Town Groups

American Legion Post	American O.R.T.
Business & Professional Women's Club of the Palisades	Grand Order of the Elk's Lodge
Hellenic Civic Club	Kiwanis Club
Lions Club	Rotary Club
Unico	V.F.W.
Fort Lee Artist Guild	Fort Lee Chamber of Commerce & Industry
Fort Lee B.P.O.E.	Fort Lee Community Blood Bank
Fort Lee Historical Society	Friends of the Fort Lee Library
Fort Lee Opera Association	Fort Lee Regular Democratic Organization
Fort Lee Tenants Association	Fort Lee Youth Center
Hadassah East Bergen Group	Japanese Women's Organization
Knights of Columbus	Madonna Church
L'Chaim	



Diane Nielson, Sales Representative
20 West Clinton Ave, Fort Lee, NJ 07024
Tel: 201-894-1234 Fax: 201-894-1235
Res: 201-541-4050 Cell: 201-463-3916

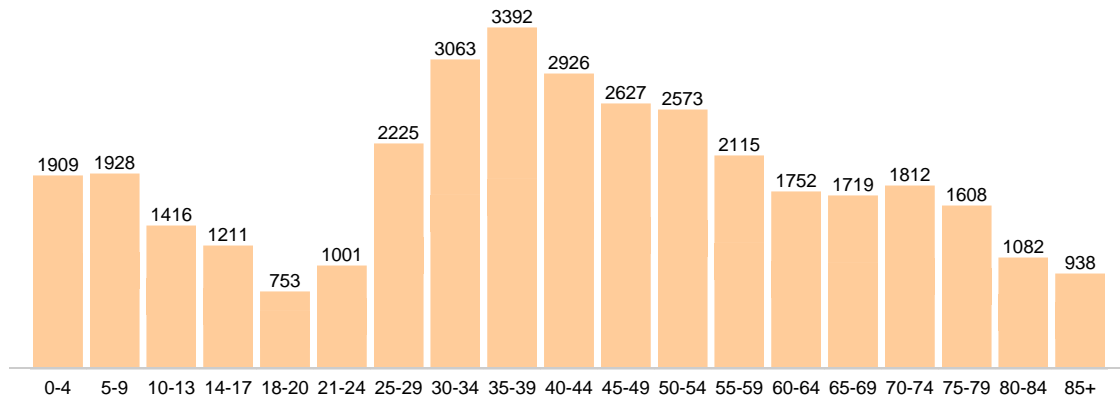
Fort Lee, NJ 07024

Community Details

Community Detail for Fort Lee, NJ

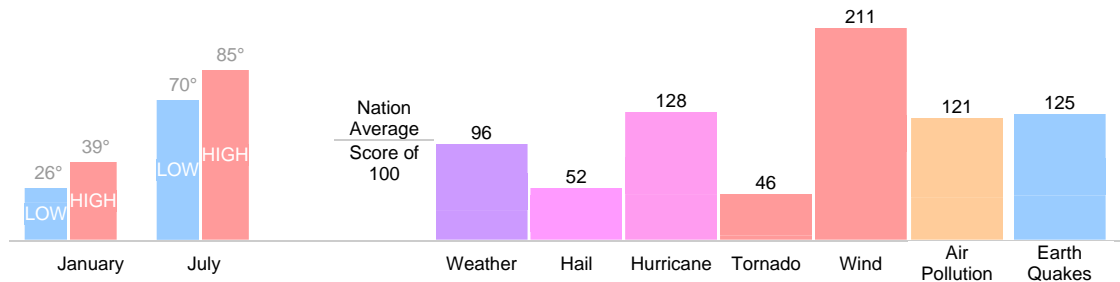
Age Demographic

Age Demographic provides a snapshot of the ages of people living in this neighborhood. The number at the top of each bar graph is used to show how many people fall into the age range shown at the bottom of the bar graph.



Environment Evaluation

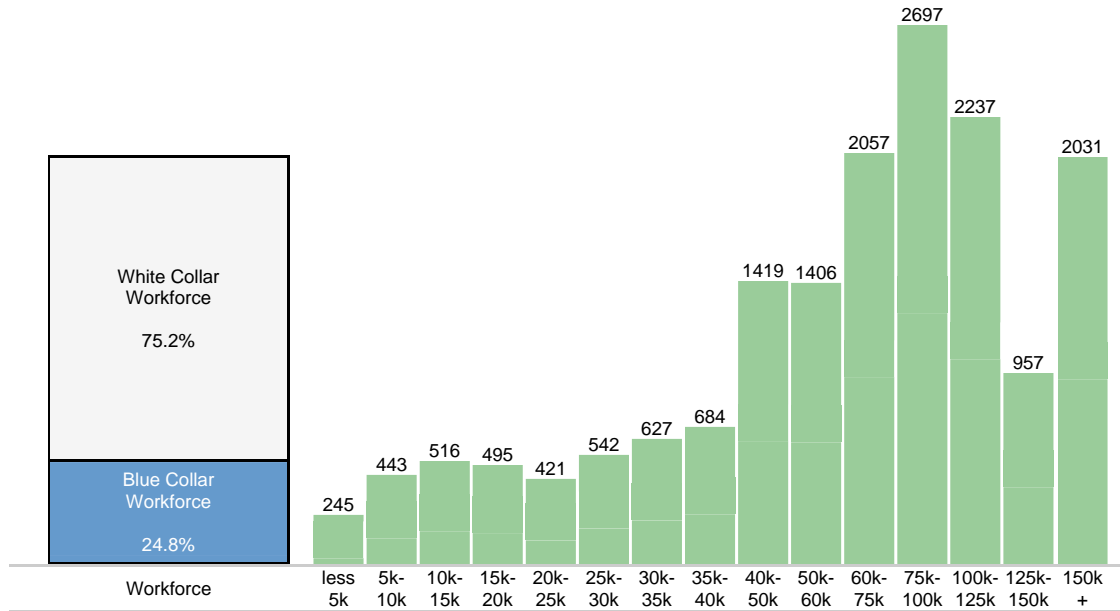
Average high and low temperatures for this neighborhood are provided below. An environmental risk evaluation compares the risk of a weather or geological event that may occur in this neighborhood with the national risk for that event. The national average is marked by a score of 100. The number at the top of the bar graph shows the risk for the event shown at the bottom of the bar graph.



Diane Nielson, Sales Representative
 20 West Clinton Ave, Fort Lee, NJ 07024
 Tel: 201-894-1234 Fax: 201-894-1235
 Res: 201-541-4050 Cell: 201-463-3916

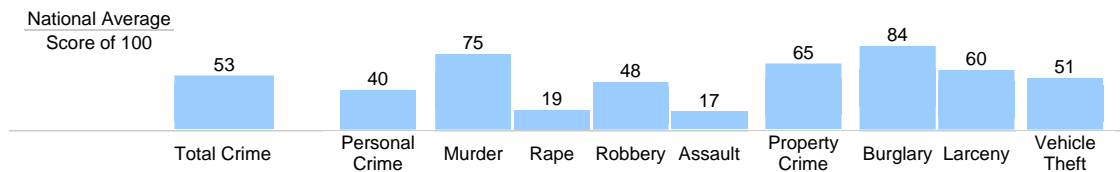
Wealth Breakdown

Wealth Breakdown provides a snapshot of the incomes of people living in this neighborhood. The number at the top of each bar graph is used to show how many people fall into the income range shown at the bottom of the bar graph.



Crime Breakdown

Neighborhood Crime Breakdown compares the crime information for this neighborhood with the national average. The national average is marked by a score of 100. The number at the top of each bar graph is used to show how that category compares to the national average.



Diane Nielson, Sales Representative
 20 West Clinton Ave, Fort Lee, NJ 07024
 Tel: 201-894-1234 Fax: 201-894-1235
 Res: 201-541-4050 Cell: 201-463-3916