

A Detailed Town Report of:

# Closter, NJ 07624



**Diane Nielson, Sales Representative**  
20 West Clinton Ave, Tenafly, NJ 07670  
Tel: 201-894-1234 Fax: 201-894-1235  
Res: 201-541-4050 Cell: 201-463-3916

This report is available online  
at: [www.diane-nielson.com](http://www.diane-nielson.com)

# Map of Bergen County



**Diane Nielson, Sales Representative**  
20 West Clinton Ave, Tenafly, NJ 07670  
Tel: 201-894-1234 Fax: 201-894-1235  
Res: 201-541-4050 Cell: 201-463-3916

This report is available online  
at: [www.diane-nielson.com](http://www.diane-nielson.com)

# Closter, NJ 07624

## Town Information

<b>Town Name:</b>	Closter
<b>City Hall:</b>	Closter Borough Hall
<b>Address:</b>	295 Closter Dock Rd., Closter
<b>Phone Number:</b>	201-784-0600
<b>Government:</b>	Mayor & Council
<b>Type:</b>	Borough
<b>Police Employees:</b>	21
<b>Population:</b>	8,383
<b>Crime Rate (per 1000 people):</b>	
<b>Persons Per Sq Mile:</b>	
<b>Distance to NYC:</b>	14 miles
<b>Website:</b>	<a href="http://www.Closterboro.com">http://www.Closterboro.com</a>

### Parks:



Director James Oettinger, 201-750-9507

Boys & Girls Scouts

Closter Swim Club

Athletic Programs: Tennis, Ice Skating Facilities

Nature Center with Nature Program, Arts & Crafts, Movie Theater

Part time Recreation Director is Employed

25 Acres of Conservation Area, 4 local parks, 5 public playgrounds, 4 athletic fields, 1 private swimming pool.



### Diane Nielson, Sales Representative

20 West Clinton Ave, Tenafly, NJ 07670

Tel: 201-894-1234 Fax: 201-894-1235

Res: 201-541-4050 Cell: 201-463-3916

This report is available online  
at: [www.diane-nielson.com](http://www.diane-nielson.com)

# Closter, NJ 07624

## Town Information

### Town History:

Indians of the Lenape Tribe occupied the land now called Closter. They were displaced by the Europeans, predominately the Dutch. For 200 years Dutch was the common language. English was not taught until 1770. Most of the Colonial architecture in the Hudson River Valley was Dutch in origin and over 20 of these original homes still remain and are still used by Closter residents. No other town in Bergen County boasts so great a concentration of houses built in or prior to 1740. In 1904, Borough of Closter was incorporated and present town boundaries were established encompassing 3.31 square miles with 150 acres of reservoirs and streams.

### Town Meetings:

Mayor/Council - 2nd and 4th Wednesdays, 8 PM at Borough Hall.  
Planning Board - 1st Wednesday and last Thursday of each month at Borough Hall.  
Zoning Board of ADJ. - 3rd Wednesday each month.  
Closter Library - 4th Tuesday of each month, 8 PM at the library.  
Shade Tree - 2nd Monday of each month except August.  
Board of Health - 3rd Thursday 7:30PM; Exceptions in July & August.

### Real Estate Ordinances:

Closter does not require any type of permit to display real estate signs; however the sign must be at least 15 feet from the curb.

### Public Library

<b>Address:</b>	280 High St.
<b>Phone Number:</b>	201-768-4197
<b>Hours:</b>	Mon.-Sat.:9AM-5PM, Mon/Wed. Evenings: 7PM-9PM
<b>Director:</b>	Ruth Rando
<b>Number of Books:</b>	48285



**Diane Nielson, Sales Representative**  
20 West Clinton Ave, Tenafly, NJ 07670  
Tel: 201-894-1234 Fax: 201-894-1235  
Res: 201-541-4050 Cell: 201-463-3916

This report is available online  
at: [www.diane-nielson.com](http://www.diane-nielson.com)

# Closter, NJ 07624

## Education & School Information

### Public Schools

Board of Education: 201-768-3001, Located at 340 Homans Avenue  
 Superintendent of School: 201-768-3001, Jeffery Feifer, Located at 340 Homans Avenue  
 Hillside School: 768-3860, Located at 340 Homans Avenue  
 Tenakill Middle School: 201-768-1332, Located at 275 High Street  
 Northern Valley Regional High School, 201-768-2200, Located at 162 Knickerbocker Road

Average Class Size	2003-2004	
	School	State
Pre-K		13.5
Kindergarten		19.1
Grade 1		19.5
Grade 2		19.7
Grade 3		20.3
Grade 4		20.7
Grade 5	22.7	21.7
Grade 6	24.0	22.2
Grade 7	33.0	22.0
Grade 8	28.6	21.8
Grade 9	18.5	21.3
Grade 10	21.8	21.2
Grade 11	22.0	20.1
Grade 12	21.4	20.2
Special Ed. (Ungraded)	5.0	9.3
<b>Total School</b>	20.2	19.4

#### Length of School Day - High School:

(Amount of time school is in session on a normal school day)

**School:** 6 hours: 40 minutes

**State Average:** 6 hours: 25 minutes

#### Instructional Time:

**School:** 5 hours: 40 minutes

**State Average:** 5 hours: 32 minutes

#### Length of School Day - Elem./Middle School:

(Amount of time school is in session on a normal school day)

**School:** 6 hours: 40 minutes

**State Average:** 6 hours: 25 minutes

#### Instructional Time:

**School:** 5 hours: 45 minutes

**State Average:** 5 hours: 32 minutes



#### Diane Nielson, Sales Representative

20 West Clinton Ave, Tenafly, NJ 07670  
 Tel: 201-894-1234 Fax: 201-894-1235  
 Res: 201-541-4050 Cell: 201-463-3916

This report is available online  
 at: [www.diane-nielson.com](http://www.diane-nielson.com)

## Closter, NJ 07624 School Information

<b>Student/Computer Ratio:</b>		
(Numbers of students per computer available for the purposes of supervised instruction)		
	School	State Average
<b>2001-02</b>	2.3	4.0
<b>2002-03</b>	2.7	3.9
<b>2003-04</b>	2.1	3.7

<b>Internet Connectivity ( NVR High School)</b>				
(Percents of room locations in the school that have access to the Internet)				
	2002-03		2003-04	
Locations	School	State Avg.	School	State Avg.
Classroom	100%	94.1%	100%	96.1%
Library/Media Ctrs	100%	99.9%	100%	94.7%
Computer Labs	100%	90.5%	100%	96.5%
All Locations	100%	95.2%	100%	96.1%

<b>Internet Connectivity ( Tenakill Middle School)</b>				
(Percents of room locations in the school that have access to the Internet)				
	2002-03		2003-04	
Locations	School	State Avg.	School	State Avg.
Classroom	100%	95.2%	100%	96.0%
Library/Media Ctrs	100%	98.0%	100%	98.3%
Computer Labs	100%	98.2%	100%	99.3%
All Locations	100%	95.8%	100%	96.5%

<b>Language Diversity: (High School)</b>	
(First language spoken at home in order of frequency)	
<b>English</b>	63.7%
<b>Korean</b>	19.2%
<b>Spanish</b>	3.4%
<b>Hebrew</b>	2.4%
<b>Japanese</b>	1.4%
<b>Hindi</b>	1.3%
<b>Mandarin</b>	1.1%
<b>Others</b>	7.5%

<b>Language Diversity: (Middle School)</b>	
(First language spoken at home in order of frequency)	
<b>English</b>	61.3%
<b>Korean</b>	22.8%
<b>Spanish</b>	2.9%
<b>Cantonese</b>	2.4%
<b>Hebrew</b>	1.9%
<b>Others</b>	8.7%



**Diane Nielson, Sales Representative**  
 20 West Clinton Ave, Tenafly, NJ 07670  
 Tel: 201-894-1234 Fax: 201-894-1235  
 Res: 201-541-4050 Cell: 201-463-3916

This report is available online  
 at: [www.diane-nielson.com](http://www.diane-nielson.com)

# Closter, NJ 07624

## Northern Valley Regional High School Information

### Advanced Placement Participation

	School	State Average
2001 - 02	32.1%	15.7%
2002 - 03	27.4%	15.8%
2003 - 04	40.8%	28.8%

### Graduation Rate:

	School	State Average
Class of 2003 (2002 - 03)	99.1%	89.4%
Class of 2004 (2003 - 04)	100.0%	90.6%

### Post Graduation Plans

(Percentage of graduating seniors pursuing various self-reported post-high school plans)

Intended Pursuits	Class of 2003	Class of 2004
Four-year College/University	90.3%	90.8%
Two-year College	4.0%	6.0%
Other College	1.8%	
Other Post-secondary School	0.4%	1.4%
Military		0.4%
Full-time Employment	1.3%	0.4%
Part-time Employment		
Unemployed		
Other	2.2%	1.0%

### Student Suspensions

(Percentage of students who were suspended)

	School	State Average
2001 - 02	9.7%	14.2%
2002 - 03	6.7%	14.2%
2003 - 04	6.1%	14.8%

### Student Expulsions

(Number of students who were expelled)

	School	State Average
2001 - 02	0	97
2002 - 03	0	82
2003 - 04	0	102

School Information Furnished by The New Jersey Department of Education at <http://education.state.nj.us>



**Diane Nielson, Sales Representative**

20 West Clinton Ave, Tenafly, NJ 07670  
 Tel: 201-894-1234 Fax: 201-894-1235  
 Res: 201-541-4050 Cell: 201-463-3916

This report is available online  
 at: [www.diane-nielson.com](http://www.diane-nielson.com)

# Closter, NJ 07624

## Services Information

Utilities and Services	
<b>Water:</b>	Hackensack Water Company
<b>Gas &amp; Electric:</b>	P.S.E.& G. / Rockland Electric
<b>Health:</b>	
<b>Sanitation:</b>	DPW: 201-784-0753. Wednesday curbside pickup for recycling. Trash collection twice a week. Recycling Program includes: glass, aluminum, Bi-metal cans, metal, plastic, cardboard, paper, magazines, grass, leaves, etc.

Houses of Worship
<ul style="list-style-type: none"><li>• • Reformed Church of Closter, West Street, 201-768-3330</li><li>• St. Paul's Evangelist Lutheran, 171 Closter Dock Road, 201-768-6310<ul style="list-style-type: none"><li>• St. Mary's Roman Catholic</li><li>• A.M.E. Zion Church, 5 Lewis, 201-767-1212</li></ul></li><li>• Closter Gospel ASSMB. Temple Beth-El of N.V., Schraalenburgh Road, 201-768-5112<ul style="list-style-type: none"><li>• Kingdom of God Jehovah's Witness's, 25 Harrington Ave., 201-768-2904<ul style="list-style-type: none"><li>• Temple Emanu-el of Closter</li></ul></li><li>• Emmaus Missions Church, 388 Demarest Avenue, 201-784-1974</li><li>• Emmus Missions Church, 370 Demarest Avenue, 201-767-9867</li></ul></li><li>• Korean Gillbott Church, Harrington Avenue &amp; West Street, 201-784-7739<ul style="list-style-type: none"><li>• Sadhu Vaswani Center</li></ul></li><li>• First Congregational Church of Closter, Harrington Avenue, 201-768-7285</li></ul>

Transportation Information	
<b>Railroads:</b>	NJ Transit, Amtrak
<b>Buses:</b>	NJ Transit, Red & Tan
<b>Major Highways:</b>	9W, Palisades Interstate Parkway, Route 4, Route 17, Garden State Parkway, NJ Turnpike
<b>Airports:</b>	Newark, Kennedy, LaGuardia
<b>Commuter Information:</b>	Red & Tan lines.



**Diane Nielson, Sales Representative**  
20 West Clinton Ave, Tenafly, NJ 07670  
Tel: 201-894-1234 Fax: 201-894-1235  
Res: 201-541-4050 Cell: 201-463-3916

This report is available online  
at: [www.diane-nielson.com](http://www.diane-nielson.com)

# Closter, NJ 07624

## Activities & Groups Information

### Miscellaneous Information

Closter Chamber of Commerce: 201-768-3475

Closter Senior Citizens: 201-784-0971

Closter Summer Workshop: 201-784-2398

Non-Emergency Police: 201-768-5000

Fire Department: 201-768-FIRE

Emergency Police, Fire, & Ambulance: 911

### Town Groups

PTO

Kiwanis Club

American Legion

Closter Woman's Club

Senior Citizens Club

Volunteer Fire Department

Chamber of Commerce

Girl and Boy Scouts

Nature Center

Lions Club

League of Women Voters

Knights of Columbus

Democratic & Republican Clubs

Closter Volunteer Ambulance Corp

Auxiliary Elks Club

American Association of University Women

Historical Society

Swim Club



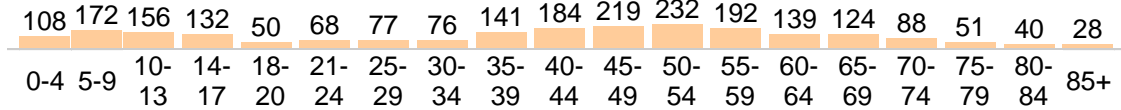
**Diane Nielson, Sales Representative**  
20 West Clinton Ave, Tenafly, NJ 07670  
Tel: 201-894-1234 Fax: 201-894-1235  
Res: 201-541-4050 Cell: 201-463-3916

This report is available online  
at: [www.diane-nielson.com](http://www.diane-nielson.com)

# Community Detail for Bergenfiled, NJ

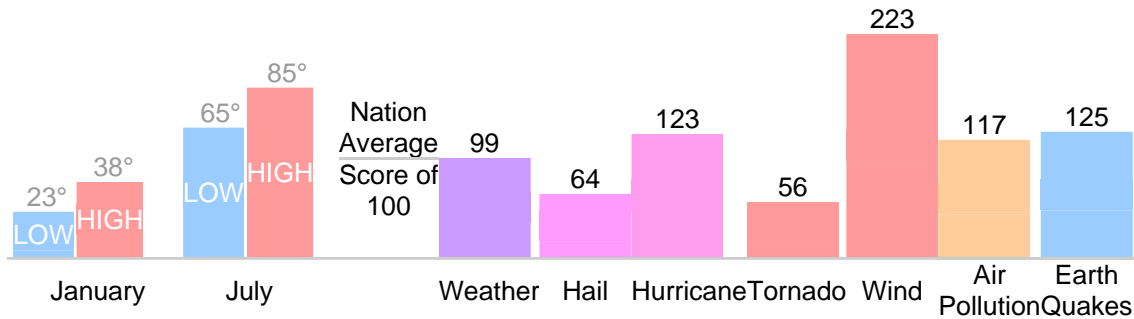
## Age Demographic

Age Demographic provides a snapshot of the ages of people living in this neighborhood. The number at the top of each bar graph is used to show how many people fall into the age range shown at the bottom of the bar graph.



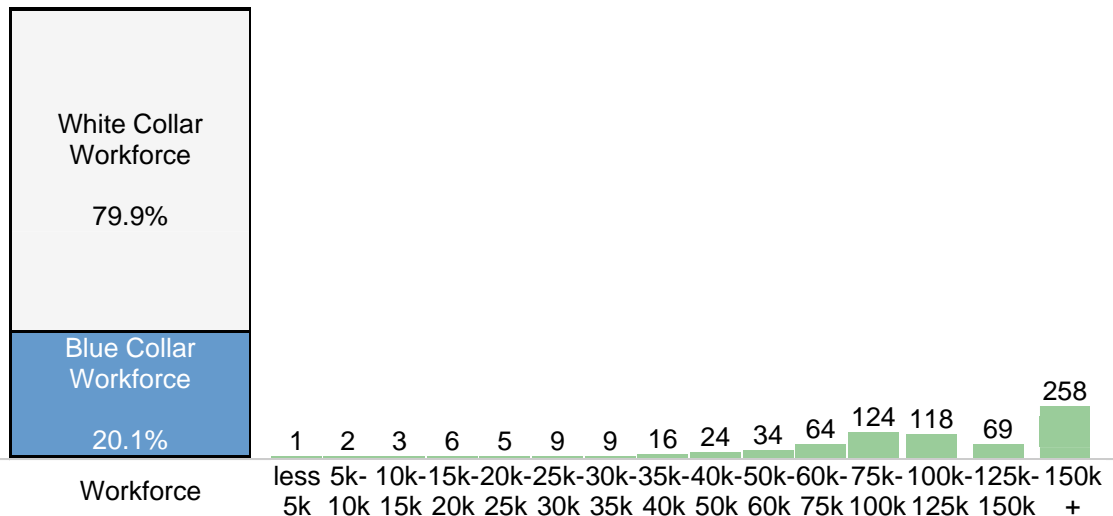
## Environment Evaluation

Average high and low temperatures for this neighborhood are provided below. An environmental risk evaluation compares the risk of a weather or geological event that may occur in this neighborhood with the national risk for that event. The national average is marked by a score of 100. The number at the top of the bar graph shows the risk for the event shown at the bottom of the bar graph.



## Wealth Breakdown

Wealth Breakdown provides a snapshot of the incomes of people living in this neighborhood. The number at the top of each bar graph is used to show how many people fall into the income range shown at the bottom of the bar graph.

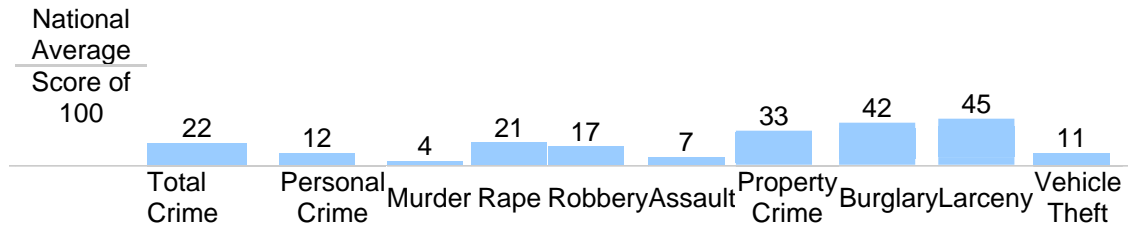


**Diane Nielson, Sales Representative**  
 20 West Clinton Ave, Tenafly, NJ 07670  
 Tel: 201-894-1234 Fax: 201-894-1235  
 Res: 201-541-4050 Cell: 201-463-3916

This report is available online at: [www.diane-nielson.com](http://www.diane-nielson.com)

### Crime Breakdown [\( Crime FAQ \)](#)

Neighborhood Crime Breakdown compares the crime information for this neighborhood with the national average. The national average is marked by a score of 100. The number at the top of each bar graph is used to show how that category compares to the national average.



Source: FBI's Uniform Crime Report (UCR)



**Diane Nielson, Sales Representative**  
20 West Clinton Ave, Tenafly, NJ 07670  
Tel: 201-894-1234 Fax: 201-894-1235  
Res: 201-541-4050 Cell: 201-463-3916

This report is available online  
at: [www.diane-nielson.com](http://www.diane-nielson.com)