

A Detailed Town Report of:

Bogota, NJ 07603



Diane Nielson, Sales Representative
20 West Clinton Ave, Allendale, NJ 07401
Tel: 201-894-1234 Fax: 201-894-1235
Res: 201-541-4050 Cell: 201-463-3916

This report is available online
at: www.diane-nielson.com

Map of Bergen County



Diane Nielson, Sales Representative
20 West Clinton Ave, Allendale, NJ 07401
Tel: 201-894-1234 Fax: 201-894-1235
Res: 201-541-4050 Cell: 201-463-3916

This report is available online
at: www.diane-nielson.com

Bogota, NJ 07603

Town Information

Town Name:	Bogota
City Hall:	Bogota Borough Hall
Address:	375 Larch Avenue, Bogota NJ 07603
Phone Number:	201-342-1736
Government:	Mayor & Council
Type:	Borough
Police Employees:	
Population:	8,249
Crime Rate (per 1000 people):	
Persons Per Sq Mile:	10,311.25
Distance to NYC:	15 miles
Website:	http://www.Bogota.nj.us

Parks:

Frank A. Pagano Memorial Park, Olsen Park, Bogota Racquet Club (Private), Bogota Swim Club (Private), Bory Exchange (Health Spa)



Diane Nielson, Sales Representative
20 West Clinton Ave, Allendale, NJ 07401
Tel: 201-894-1234 Fax: 201-894-1235
Res: 201-541-4050 Cell: 201-463-3916

This report is available online
at: www.diane-nielson.com

Bogota, NJ 07603

Town Information

Town History:

Bogota, prior to 1898, had a population of less than 400, one banking institution (The Bogota Building & Loan Association), The Bogota Water & Light Co. *Which furnished no light*, The Riverside Planning Mill, and The Bogota Paper Company. In April 1898, The Bergen traction company was granted a Franchise to run a trolley terminating at River Road. This trolley connected with Leonia, Englewood, Fort Lee, & the 125th Street ferry. Throngs, both young & old, from New York took advantage of open trolley rides on hot summer evenings.

Town Meetings:

Meetings are held on 3rd Thursdays at Borough Hall at 7:30 pm.

Real Estate Ordinances:

None Listed.

Public Library

Address:	375 Larch Avenue
Phone Number:	201-488-7185
Hours:	M/T/Th: 10 - 5, 7 - 9, W/F: 10-5, Sat: 10 - 1
Director:	Jonna Davis
Number of Books:	36,765



Diane Nielson, Sales Representative
20 West Clinton Ave, Allendale, NJ 07401
Tel: 201-894-1234 Fax: 201-894-1235
Res: 201-541-4050 Cell: 201-463-3916

This report is available online
at: www.diane-nielson.com

Bogota, NJ 07603

Education & School Information

Public Schools

Board of Education: 201-441-4800, Roy Corso, located at 1 Henry Lutheran Place

ELEMENTARY SCHOOLS:

Roy E. Bixby School: 201-441-4834, Fischer Avenue

Lillian M. Steen School: 201-441-4824, River Road

HIGH SCHOOL:

Bogota High School: 201-441-4808, located at 1 Henry Lutheran Place

Average Class Size	2003-2004	
	School	State
Pre-K		13.5
Kindergarten	29.0	19.1
Grade 1	16.0	19.5
Grade 2	19.5	19.7
Grade 3	19.0	20.3
Grade 4	16.5	20.7
Grade 5	18.5	21.7
Grade 6	25.0	22.2
Grade 7	9.5	22.0
Grade 8	9.4	21.8
Grade 9	22.0	20.8
Grade 10	20.8	21.2
Grade 11	13.2	20.1
Grade 12	15.4	20.2
Special Ed. (Ungraded)		9.3
Total School	13.4	19.4

Length of School Day - High School:

(Amount of time school is in session on a normal school day)

School: 6 hours: 10 minutes

State Average: 6 hours: 34 minutes

Instructional Time:

School: 5 hours: 0 minutes

State Average: 5 hours: 30 minutes

Length of School Day - Middle School:

(Amount of time school is in session on a normal school day)

School: 6 hours: 15 minutes

State Average: 6 hours: 25 minutes

Instructional Time:

School: 5 hours: 35 minutes

State Average: 5 hours: 32 minutes



Diane Nielson, Sales Representative
 20 West Clinton Ave, Allendale, NJ 07401
 Tel: 201-894-1234 Fax: 201-894-1235
 Res: 201-541-4050 Cell: 201-463-3916

This report is available online
 at: www.diane-nielson.com

Bogota, NJ 07603

School Information

Student/Computer Ratio:				
(Numbers of students per computer available for the purposes of supervised instruction)				
	High School	State Average	Middle School	State Average
2001-02	8.8	4.0	8.6	4.7
2002-03	8.9	3.9	8.1	4.4
2003-04	6.9	3.7	7.9	4.1

Internet Connectivity (High School)				
(Percents of room locations in the school that have access to the Internet)				
	2002-03		2003-04	
Locations	School	State Avg.	School	State Avg.
Classroom	0.0%	94.1%	0.0%	96.1%
Library/Media Ctrs	100%	99.9%	100%	94.7%
Computer Labs	100%	90.5%	100%	96.5%
All Locations	8.8%	95.2%	8.8%	96.1%

Internet Connectivity (Middle School)				
(Percents of room locations in the school that have access to the Internet)				
	2002-03		2003-04	
Locations	School	State Avg.	School	State Avg.
Classroom	0.0%	95.2%	0.0%	96.0%
Library/Media Ctrs	0.0%	98.0%	0.0%	98.3%
Computer Labs	100%	98.2%	0.0%	99.3%
All Locations	100%	95.8%	0.0%	96.5%

Language Diversity: (High School)	
(First language spoken at home in order of frequency)	
English	69.1%
Spanish	23.4%
Korean	2.0%
Pilipino	1.2%
Others	4.3%

Language Diversity: (Middle School)	
(First language spoken at home in order of frequency)	
English	60.7%
Spanish	27.2%
Pilipino	1.8%
Korean	2.1%
Pampango	1.4%
Farsi	1.1%
Japanese	1.1%
Others	4.6%



Diane Nielson, Sales Representative
 20 West Clinton Ave, Allendale, NJ 07401
 Tel: 201-894-1234 Fax: 201-894-1235
 Res: 201-541-4050 Cell: 201-463-3916

This report is available online
 at: www.diane-nielson.com

Bogota, NJ 07603

High School Information

Advanced Placement Participation

	School	State Average
2001 - 02	9.2%	15.7%
2002 - 03	6.1%	15.8%
2003 - 04	11.2%	28.8%

Graduation Rate:

	School	State Average
Class of 2003 (2002 - 03)	100%	89.4%
Class of 2004 (2003 - 04)	100%	90.6%

Post Graduation Plans

(Percentage of graduating seniors pursuing various self-reported post-high school plans)

Intended Pursuits	Class of 2003	Class of 2004
Four-year College/University	46.2%	65.2%
Two-year College	37.1%	28.5%
Other College	1.4%	
Other Post-secondary School		
Military	4.2%	3.8%
Full-time Employment	11.2%	
Part-time Employment		
Unemployed		
Other	0.0%	2.5%

Dropout Rates

2003 - 04

Percentage of students in grades 9-12 who dropped out during the school year	School	State
White	0.3%	1.1%
Black	0.0%	3.5%
Asian & Pacific Islander	0.0%	0.7%
American Indian & Alaska Native	0.0%	5.3%
Hispanic	0.0%	3.9%
Male	0.6%	2.2%
Female	0.0%	1.6%
Total:	0.3	1.9%

Student Expulsions

(Number of students who were expelled)

	School	State Average
2001 - 02	0	97
2002 - 03	0	82
2003 - 04	0	102

Student Suspensions

(Percentage of students who were suspended)

	School	State Average
2001 - 02	14.6	14.2%
2002 - 03	12.1%	14.2%
2003 - 04	13.5	14.8%

School Information Furnished by The New Jersey Department of Education at <http://education.state.nj.us>



Diane Nielson, Sales Representative
 20 West Clinton Ave, Allendale, NJ 07401
 Tel: 201-894-1234 Fax: 201-894-1235
 Res: 201-541-4050 Cell: 201-463-3916

This report is available online
 at: www.diane-nielson.com

Bogota, NJ 07603

Services Information

Utilities and Services	
Water:	United Water Company
Gas & Electric:	P.S.E. & G.
Health:	Holy Name Hospital (about 2 miles)
Sanitation:	Garbage is collected twice weekly (Mon/Thurs or Tues/Fri). Recycling center will remain open Monday - Saturday.

Houses of Worship
<ul style="list-style-type: none">▪ Trinity Lutheran Evangelical, 167 Palisade Avenue, 201-487-3576<ul style="list-style-type: none">▪ Korean Episcopal Church of the Ascension▪ Bogota Memorial Reformed, West Fort Lee Road, 201-487-1029▪ St. Joseph's Roman Catholic, 115 West Fort Lee Rd, 201-343-9150▪ Japanese Evangelical Church, 160 Palisade Ave, 201-488-5401

Transportation Information	
Railroads:	NJ Transit, Amtrak
Buses:	NJ Transit, Red & Tan
Major Highways:	9W, Palisades Interstate Parkway, Route 4, Route 17, Garden State Parkway, NJ Turnpike
Airports:	Newark, Kennedy, LaGuardia
Commuter Information:	Bus Service available through New Jersey Transit Buses. Access to Highways Route 4, 80 & 46.



Diane Nielson, Sales Representative
20 West Clinton Ave, Allendale, NJ 07401
Tel: 201-894-1234 Fax: 201-894-1235
Res: 201-541-4050 Cell: 201-463-3916

This report is available online
at: www.diane-nielson.com

Bogota, NJ 07603

Activities & Groups Information

Misc. Information

Bogota Swim Club: 201-489-1991, located on the West Park Place Extension
Bogota Racquetball Club: 201-489-1122, located at 156 West Main

Town Groups

Bogota Senior Citizen's Club	Ki/Trave Clubs
Bogota Boy/Girl Scouts	Ralph Hall VFW Post 5561
Bogota Baseball Org.	Mason Temple Lodge 230
Bogota Republican & Democratic Clubs	Bogota Ladies Auxiliary of VFW
Bogota Women's Club	Bogota Landlord & Tenant Organization
American Legion	Knights of Columbus
Bogota Lions Club	



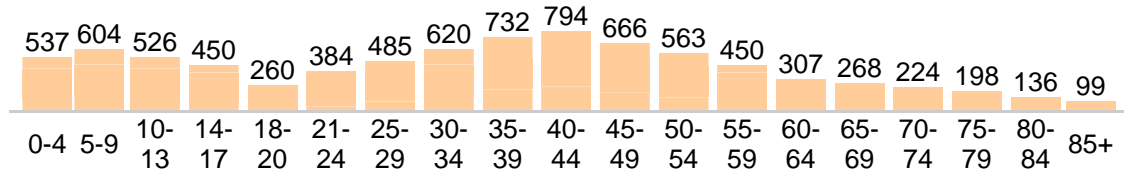
Diane Nielson, Sales Representative
20 West Clinton Ave, Allendale, NJ 07401
Tel: 201-894-1234 Fax: 201-894-1235
Res: 201-541-4050 Cell: 201-463-3916

This report is available online
at: www.diane-nielson.com

Community Detail for Bogota, NJ

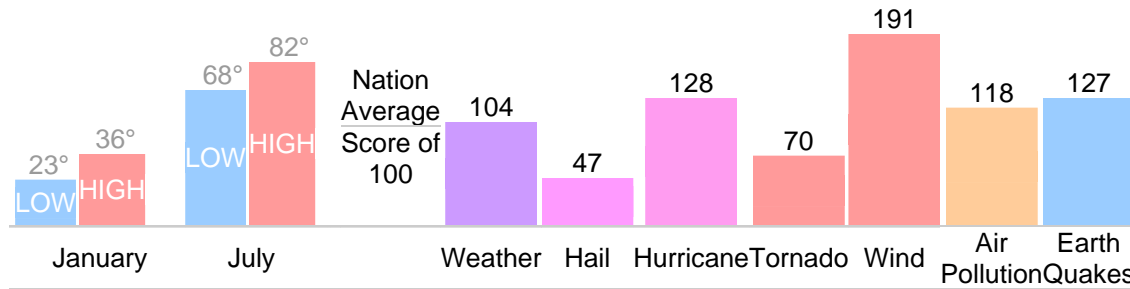
Age Demographic

Age Demographic provides a snapshot of the ages of people living in this neighborhood. The number at the top of each bar graph is used to show how many people fall into the age range shown at the bottom of the bar graph.



Environment Evaluation

Average high and low temperatures for this neighborhood are provided below. An environmental risk evaluation compares the risk of a weather or geological event that may occur in this neighborhood with the national risk for that event. The national average is marked by a score of 100. The number at the top of the bar graph shows the risk for the event shown at the bottom of the bar graph.

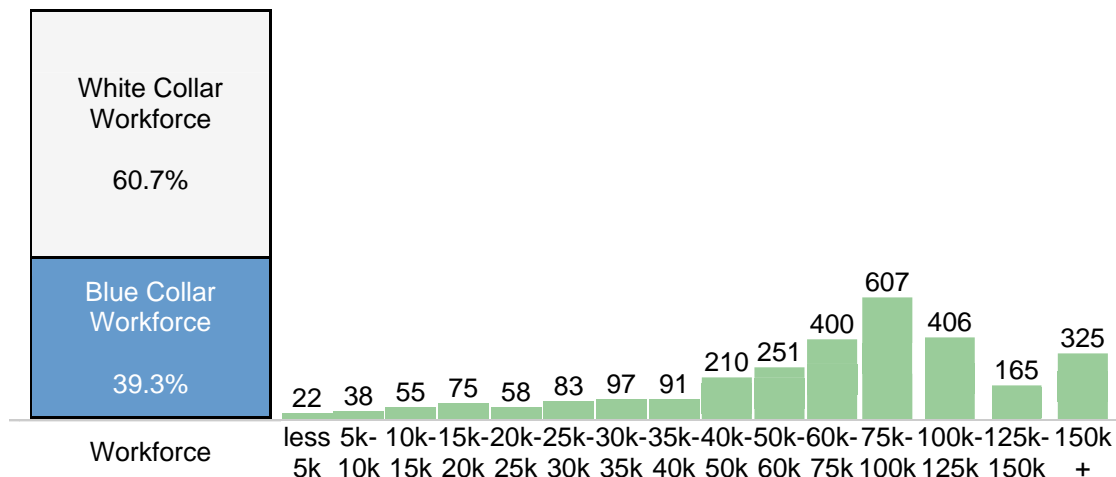


Diane Nielson, Sales Representative
 20 West Clinton Ave, Allendale, NJ 07401
 Tel: 201-894-1234 Fax: 201-894-1235
 Res: 201-541-4050 Cell: 201-463-3916

This report is available online
 at: www.diane-nielson.com

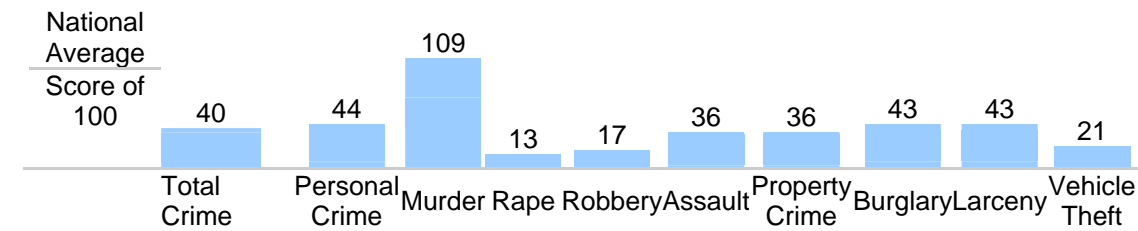
Wealth Breakdown

Wealth Breakdown provides a snapshot of the incomes of people living in this neighborhood. The number at the top of each bar graph is used to show how many people fall into the income range shown at the bottom of the bar graph.



Crime Breakdown

Neighborhood Crime Breakdown compares the crime information for this neighborhood with the national average. The national average is marked by a score of 100. The number at the top of each bar graph is used to show how that category compares to the national average.



Source: FBI's Uniform Crime Report (UCR)



Diane Nielson, Sales Representative
 20 West Clinton Ave, Allendale, NJ 07401
 Tel: 201-894-1234 Fax: 201-894-1235
 Res: 201-541-4050 Cell: 201-463-3916

This report is available online
 at: www.diane-nielson.com