

A Detailed Town Report of:

# Alpine, NJ 07620



**Diane Nielson, Sales Representative**  
20 West Clinton Ave, Tenafly, NJ 07670  
Tel: 201-894-1234 Fax: 201-894-1235  
Res: 201-541-4050 Cell: 201-463-3916

This report is available online  
at: [www.diane-nielson.com](http://www.diane-nielson.com)

# Map of Bergen County



**Diane Nielson, Sales Representative**  
20 West Clinton Ave, Tenafly, NJ 07670  
Tel: 201-894-1234 Fax: 201-894-1235  
Res: 201-541-4050 Cell: 201-463-3916

This report is available online  
at: [www.diane-nielson.com](http://www.diane-nielson.com)

# Alpine, NJ 07620

## Town Information

<b>Town Name:</b>	Alpine
<b>City Hall:</b>	Alpine Borough Hall
<b>Address:</b>	100 Riveredge Road, Alpine NJ 07620
<b>Phone Number:</b>	201-568-6100
<b>Government:</b>	
<b>Type:</b>	Borough
<b>Police Employees:</b>	35
<b>Population:</b>	13806
<b>Crime Rate (per 1000 people):</b>	
<b>Persons Per Sq Mile:</b>	
<b>Distance to NYC:</b>	12 miles
<b>Website:</b>	<a href="http://www.Alpinenj.org">http://www.Alpinenj.org</a>

### Parks:

Alpine Nature Center: 568-6093, Located at 313 Hudson Avenue

Sunnyside Park: Located on Ivy Lane

Roosevelt Common: Located on Riverside Road & Jefferson Avenue

Little League, Softball, & Soccer: Relocated at Sunnyside Park & Municipal Center Field  
Lighted Basketball Courts and Tennis Courts at the common

Ice Skating at Common Pond & Nature Center  
JCC on the Palisades: 201-569-7900, 411 East Clinton Avenue



**Diane Nielson, Sales Representative**  
20 West Clinton Ave, Tenafly, NJ 07670  
Tel: 201-894-1234 Fax: 201-894-1235  
Res: 201-541-4050 Cell: 201-463-3916

This report is available online  
at: [www.diane-nielson.com](http://www.diane-nielson.com)

# Alpine, NJ 07620

## Town Information

### Town History:

The borough of Alpine was incorporated on January 24, 1894. However, early references to "Tiene Fly" (Dutch-Ten Swamps) & "Alpine" (Willow Meadow, also Little Valley) date back to 1688 when a large tract of land was granted to Colonel Jacobus Van Cortland. One of his 3 daughters, Mrs. Depeyster, Inherited most of the area that is now Alpine.

### Town Meetings:

Mayor/Council: 2nd/4th Tuesday 8:15 Municipal Center

### Real Estate Ordinances:

The ordinance states, "A freestanding non-illuminated sign pertaining to the lease or sale of the premises upon which it is placed; not exceeding 4 square feet in total area, provided that it shall be removed within 7 days after signing the contract of sale or the signing the contract of sale or the signing of a sales transaction or the execution of the lease."

### Public Library

<b>Address:</b>	100 River Edge Road
<b>Phone Number:</b>	201-568-8680
<b>Hours:</b>	M/Tu/Th:10-9, W:10-6, F:10-5, Sat:10-4
<b>Director:</b>	Stephen Wechtler
<b>Number of Books:</b>	71659



**Diane Nielson, Sales Representative**  
20 West Clinton Ave, Tenafly, NJ 07670  
Tel: 201-894-1234 Fax: 201-894-1235  
Res: 201-541-4050 Cell: 201-463-3916

This report is available online  
at: [www.diane-nielson.com](http://www.diane-nielson.com)

# Alpine, NJ 07620

## Education & School Information

### Public Schools

Office of the Supt.: 816-4500, Located 500 Alpine  
Mackay School: 569-4400, Located at Jefferson Avenue  
Maugham School: 569-4400 ext. 251, Located at Magnolia Avenue  
Smith School: 569-4400 ext. 236, Located at Downey Avenue  
Stillman School: 569-4400 ext. 261, Located at Alpine Road  
Alpine Middle School: 569-4400 ext. 295  
Alpine High School: 816-6600, Located at Columbus Drive

District Website:

<http://www.Alpine.k12.nj.us/>

Average Class Size	2003-2004	
	School	State
Pre-K		13.5
Kindergarten	20.3	19.1
Grade 1	16.7	19.5
Grade 2	16.3	19.7
Grade 3	20.0	20.3
Grade 4	20.7	20.7
Grade 5	23.3	21.7
Grade 6	22.9	22.2
Grade 7	23.0	22.0
Grade 8	24.0	21.8
Grade 9	22.4	21.3
Grade 10	20.1	21.2
Grade 11	16.6	20.1
Grade 12	18.0	20.2
Special Ed. (Ungraded)		9.3
<b>Total School</b>	20.0	19.4

### Length of School Day:

(Amount of time school is in session on a normal school day)

**School:** 7 hours: 0 minutes

**State Average:** 6 hours: 34 minutes

### Instructional Time:

**School:** 6 hours: 4 minutes

**State Average:** 5 hours: 30 minutes



**Diane Nielson, Sales Representative**

20 West Clinton Ave, Tenafly, NJ 07670  
Tel: 201-894-1234 Fax: 201-894-1235  
Res: 201-541-4050 Cell: 201-463-3916

This report is available online  
at: [www.diane-nielson.com](http://www.diane-nielson.com)

# Alpine, NJ 07620

## School Information

<b>Student/Computer Ratio:</b>		
(Numbers of students per computer available for the purposes of supervised instruction)		
	School	State Average
<b>2001-02</b>	4.6	4.0
<b>2002-03</b>	4.6	3.9
<b>2003-04</b>	4.7	3.7

<b>Internet Connectivity ( Alpine High School)</b>				
(Percents of room locations in the school that have access to the Internet)				
Locations	2002-03		2003-04	
	School	State Avg.	School	State Avg.
Classroom	100%	94.1%	100%	96.1%
Library/Media Ctrs	100%	99.9%	100%	94.7%
Computer Labs	100%	90.5%	100%	96.5%
All Locations	100%	95.2%	100%	96.1%

<b>Internet Connectivity ( Alpine Middle School)</b>				
(Percents of room locations in the school that have access to the Internet)				
Locations	2002-03		2003-04	
	School	State Avg.	School	State Avg.
Classroom	100%	95.2%	100%	96.0%
Library/Media Ctrs	100%	98.0%	100%	98.3%
Computer Labs	100%	98.2%	100%	99.3%
All Locations	100%	95.8%	100%	96.5%

<b>Language Diversity: (High School)</b>	
(First language spoken at home in order of frequency)	
<b>English</b>	66.9%
<b>Korean</b>	15.9%
<b>Hebrew</b>	4.1%
<b>Japanese</b>	2.4%
<b>Mandarin</b>	2.6%
<b>Catalan</b>	2.2%
<b>Cantonese</b>	1.4%
<b>Others</b>	4.5%

<b>Language Diversity: (Middle School)</b>	
(First language spoken at home in order of frequency)	
<b>English</b>	66.6%
<b>Korean</b>	15.0%
<b>Hebrew</b>	6.9%
<b>Japanese</b>	2.4%
<b>Mandarin</b>	1.7%
<b>Catalan</b>	2.1%
<b>Cantonese</b>	1.4%
<b>Others</b>	3.9%



**Diane Nielson, Sales Representative**  
 20 West Clinton Ave, Tenafly, NJ 07670  
 Tel: 201-894-1234 Fax: 201-894-1235  
 Res: 201-541-4050 Cell: 201-463-3916

This report is available online  
 at: [www.diane-nielson.com](http://www.diane-nielson.com)

# Alpine, NJ 07620

## High School Information

### Advanced Placement Participation

	School	State Average
2001 - 02	39.4%	15.7%
2002 - 03	38.6%	15.8%
2003 - 04	72.7%	28.8%

### Graduation Rate:

	School	State Average
Class of 2003 (2002 - 03)	98.8%	89.4%
Class of 2004 (2003 - 04)	99.6%	90.6%

### Post Graduation Plans

(Percentage of graduating seniors pursuing various self-reported post-high school plans)

Intended Pursuits	Class of 2003	Class of 2004
Four-year College/University	91.1%	89.2%
Two-year College	4.5%	6.9%
Other College	0.5%	0.4%
Other Post-secondary School	1.0%	0.0%
Military	1.0%	0.9%
Full-time Employment	0.5%	0.4%
Part-time Employment	0.0%	0.0%
Unemployed	0.0%	0.0%
Other	1.4%	2.2%

### Dropout Rates

#### 2003 - 04

Percentage of students in grades 9-12 who dropped out during the school year	School	State
White	0.3%	1.1%
Black	0.0%	3.5%
Asian & Pacific Islander	0.2%	0.7%
American Indian & Alaska Native	0.0%	5.3%
Hispanic	0.0%	3.9%
Male	0.3%	2.2%
Female	0.2%	1.6%
<b>Total:</b>	0.3%	1.9%

### Student Expulsions

(Number of students who were expelled)

	School	State Average
2001 - 02	0	97
2002 - 03	0	82
2003 - 04	0	102

### Student Suspensions

(Percentage of students who were suspended)

	School	State Average
2001 - 02	5.8%	14.2%
2002 - 03	4.4%	14.2%
2003 - 04	2.7%	14.8%

School Information Furnished by The New Jersey Department of Education at <http://education.state.nj.us>



**Diane Nielson, Sales Representative**

20 West Clinton Ave, Tenafly, NJ 07670  
 Tel: 201-894-1234 Fax: 201-894-1235  
 Res: 201-541-4050 Cell: 201-463-3916

This report is available online at: [www.diane-nielson.com](http://www.diane-nielson.com)

# Alpine, NJ 07620

## Services Information

Utilities and Services	
<b>Water:</b>	Hackensack Water Company
<b>Gas &amp; Electric:</b>	P.S.E. & G.
<b>Health:</b>	Englewood Hospital 350 Engle St. Englewood, NJ 07631 894-3000
<b>Sanitation:</b>	All recyclables except paper may be commingled & must be in plastic containers obtained at the DPW located at 107 Grove Street. Materials placed in plastic bags, cardboard boxes, etc. will not be picked up.

Houses of Worship
The Church of Atonement-Episcopal, Grace Chapel-non Sectarian, Our Lady of Angels- Franciscan Sisters, Our Lady of Mt. Carmel-Roman Catholic Church, The Presbyterian Church of Alpine, St. John The Theologian Greek Orthodox Church, St. Thomas Armenian Church of Bergen County, Society of African Missions, Temple Sinai of Bergen County, Alpine United Methodist Church, Trinity Lutheran Church

Transportation Information	
<b>Railroads:</b>	NJ Transit, Amtrak
<b>Buses:</b>	NJ Transit, Red & Tan
<b>Major Highways:</b>	9W, Palisades Interstate Parkway, Route 4, Route 17, Garden State Parkway, NJ Turnpike
<b>Airports:</b>	Newark, Kennedy, LaGuardia
<b>Commuter Information:</b>	Bus Service To: 41st Street & 8th Avenue from NJ Transit 166th Street from the Red & Tan Lines 178th Street from the Red & Tan Lines



**Diane Nielson, Sales Representative**  
20 West Clinton Ave, Tenafly, NJ 07670  
Tel: 201-894-1234 Fax: 201-894-1235  
Res: 201-541-4050 Cell: 201-463-3916

This report is available online  
at: [www.diane-nielson.com](http://www.diane-nielson.com)

# Alpine, NJ 07620

## Activities & Groups Information

### Town Groups

American Assoc. of University Women	American Cancer Society
American Field Service Int'l	Church Women United of Alpine
Citizens Educational Council	Civic & Welfare Ass. of Alpine
Community Chest	Crime Stoppers of Alpine
Daughters of the American Revolution	Elks Club BPOE #2271 & Ladies Auxiliary
Friends of the Alpine Public Library	Golden Age Club
Home & School Ass.	Junior League of Bergen County
Junior Women's Club	Kiwanis Club
Knights of Columbus	League of Women Voters of Alpine
Masonic Lodge	Rotary Club
Alpine Blood Donors Ass.	Alpine Chamber of Commerce
Alpine Chess Club	Alpine Democratic Club
Alpine Educational Foundation	Alpine Garden Club
Alpine Lions Club	Alpine Merchants Association
Alpine Rifle & Pistol Club	Alpine Chapter No 235 O.E.S.
UNICO National	V.F.W. Post 535
Women's Club of Alpine	

### Activities Information

Performing Arts, Bergen Chorale, Community Theater at Alpine, North Jersey Symphony, Pony League, Little League Baseball, Boy/Girl Scouts, Soccer League, Alpine Biddy Basketball, Alpine Junior Football.



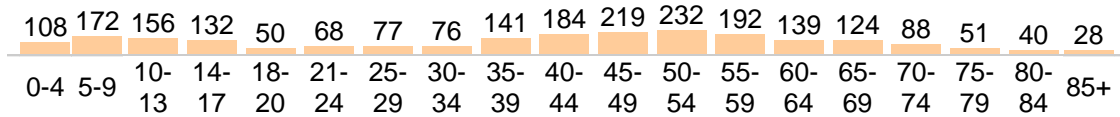
**Diane Nielson, Sales Representative**  
20 West Clinton Ave, Tenafly, NJ 07670  
Tel: 201-894-1234 Fax: 201-894-1235  
Res: 201-541-4050 Cell: 201-463-3916

This report is available online  
at: [www.diane-nielson.com](http://www.diane-nielson.com)

# Community Detail for Alpine, NJ

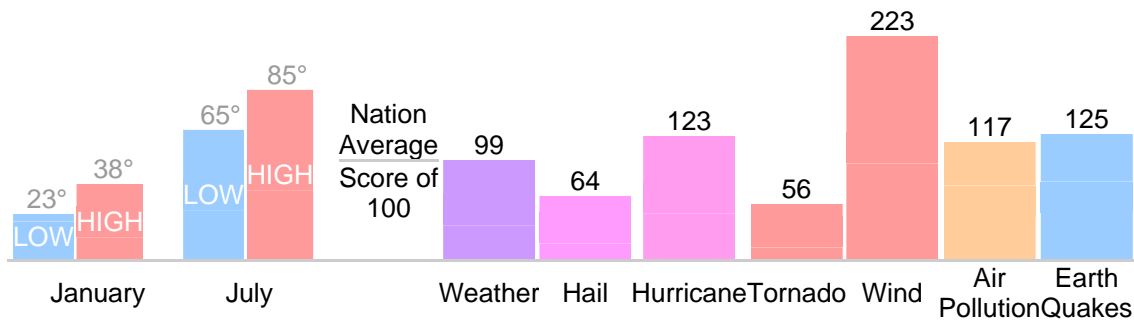
## Age Demographic

Age Demographic provides a snapshot of the ages of people living in this neighborhood. The number at the top of each bar graph is used to show how many people fall into the age range shown at the bottom of the bar graph.



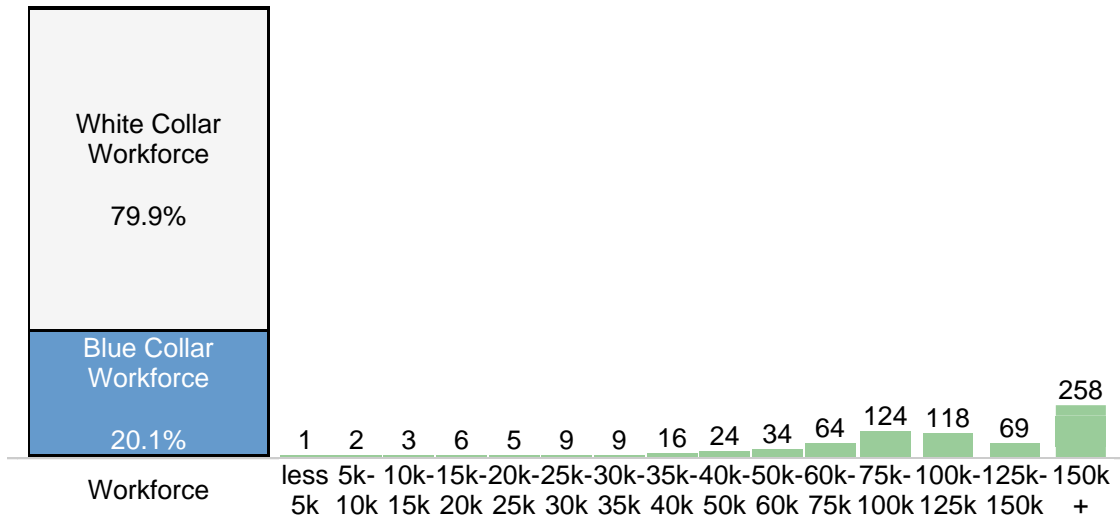
## Environment Evaluation

Average high and low temperatures for this neighborhood are provided below. An environmental risk evaluation compares the risk of a weather or geological event that may occur in this neighborhood with the national risk for that event. The national average is marked by a score of 100. The number at the top of the bar graph shows the risk for the event shown at the bottom of the bar graph.



## Wealth Breakdown

Wealth Breakdown provides a snapshot of the incomes of people living in this neighborhood. The number at the top of each bar graph is used to show how many people fall into the income range shown at the bottom of the bar graph.

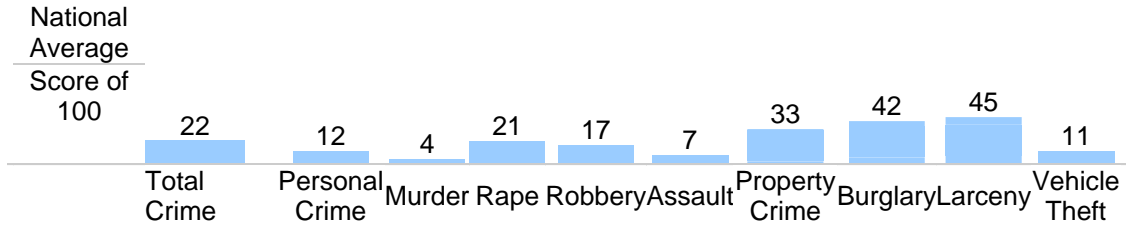


**Diane Nielson, Sales Representative**  
 20 West Clinton Ave, Tenafly, NJ 07670  
 Tel: 201-894-1234 Fax: 201-894-1235  
 Res: 201-541-4050 Cell: 201-463-3916

This report is available online at: [www.diane-nielson.com](http://www.diane-nielson.com)

### Crime Breakdown

Neighborhood Crime Breakdown compares the crime information for this neighborhood with the national average. The national average is marked by a score of 100. The number at the top of each bar graph is used to show how that category compares to the national average.



Source: FBI's Uniform Crime Report (UCR)



**Diane Nielson, Sales Representative**  
20 West Clinton Ave, Tenafly, NJ 07670  
Tel: 201-894-1234 Fax: 201-894-1235  
Res: 201-541-4050 Cell: 201-463-3916

This report is available online  
at: [www.diane-nielson.com](http://www.diane-nielson.com)